



Parks and Recreation Board Agenda
Department of Public Services
851 South Eton-Conference Room
Tuesday, September 12, 2023
6:30 PM

- I. Call to order**
- II. Roll Call**
- III. Announcements, Introductions of Guests & Chairpersons Comments**
- IV. Open To The Public for Items Not On the Agenda** (*two minutes per person*)
 - No one may speak a second time until everyone in the audience has spoken.
 - The chairperson may alternate speakers pro & con on issues being discussed.
- V. Approval of the minutes of: August 1, 2023** (*regular meeting*)
- VI. Unfinished Business**
- VII. New Business-** *Written and submitted by 5pm Monday at the Birmingham Ice Sports Arena, one week prior to the meeting.*
 - 1. Oakland County Parks and Recreation Grant Received
 - 2. Trail Improvements Concept Plan (*verbal*)
 - 3. Parks and Recreation Master Plan Update
 - 4. Pickleball Update

VIII. Miscellaneous Communications

IX. Reports From Staff

X. Items for Next Meeting: October 3, 2023

XI. Adjournment

Individuals requiring accommodations, such as interpreter services, for effective participation in this meeting should contact the City Clerk's Office at (248) 530-1880 at least one day in advance of the public meeting.
Las personas que requirieren alojamiento, tales como servicios de interpretación, la participación efectiva en esta reunión deben ponerse en contacto con la Oficina del Secretario Municipal al (248) 530-1880 por lo menos el día antes de la reunión pública.
(Title VI of the Civil Rights Act of 1964).

*If you cannot attend the meetings, please contact Connie Folk at the Birmingham Ice Arena (248) 530-1642.
Minutes are available for review at the Birmingham Ice Sports Arena, 2300 East Lincoln, Birmingham, MI 48009*

PARKS & RECREATION BOARD MISSION STATEMENT

The Parks and Recreation Board strives to provide opportunities for the enjoyment, education, and inspiration for present and future generations of residents and visitors through stewardship of natural, cultural and recreational resources. By continuously elevating the beauty and quality of the parks and recreation system of Birmingham, the Parks and Recreation Board will promote health and wellbeing, and strengthen the community.

Should you have any statement regarding the above, you are invited to attend the meeting in person or virtually through
ZOOM: <https://zoom.us/j/98191466679> **Meeting ID:** 981 9146 6679
You may also present your written statement to:
City of Birmingham, Parks and Recreation Board
851 South Eton, Birmingham, Michigan 48009 prior to the meeting.

PARKS AND RECREATION BOARD MEETING MINUTES
August 1, 2023

Heather Carmona, Chairperson, called the meeting to order at 6:30 pm at 851 South Eton.

MEMBERS PRESENT: Heather Carmona
Susan Collins
Pam Graham
Sarah Kupczyk
Anne Lipp
John Rusche
Steve Sweeney

MEMBERS ABSENT: Sarah Kupczyk

STUDENT REPRESENTATIVES PRESENT: Archie Reynolds, Seaholm High School

STUDENT REPRESENTATIVES ABSENT: Katie Glasier, Seaholm High School

ADMINISTRATION: Scott Zielinski, Director of Public Services
Carrie A. Laird, Parks and Recreation Manager
Leah Blizinski, City Planner
Brendan McGaughey, Parks & Forestry Foreman
Connie J. Folk, Recreation Coordinator

PRESENTERS: Jane Dixon, McKenna

GUESTS: Jeff Boes, Nina Boes, Jack Burns,
Jessica Einstein, Ross Kaplan,
Andrea Lafontaine, Don Lawrence,
Veronika Lawrence, Antonia Lawrence,
Joan Ritter and Joe Wrobel

ANNOUNCEMENTS, INTRODUCTIONS OF GUESTS & CHAIRPERSON COMMENTS:

No announcements, introductions of guests & chairperson comments

OPEN TO THE PUBLIC FOR ITEMS NOT ON THE AGENDA:

Joan Ritter asked the question about Japanese Knot weed which is an invasive weed and was located in several yards including her yard. Ritter coordinated a few years ago to hire a contractor to treat the invasive and it is coming back. Ritter inquired if the City of Birmingham would ever get involved with such a removal.

DPS Director Zielinski stated that normal order when it’s brought up is not for a back and forth with the public. But that item in general please contact the Department of Public Services at a later time to have a discussion. DPS Director Zielinski recommended to reach out to Carrie specifically about this item.

Chairperson Carmona suggested that an email on this be sent to the Department of Public Services so that they can respond regarding your concern.

APPROVAL OF THE MINUTES:

It was moved by Graham, seconded by Rusche, to approve the minutes of the Tuesday, July 11, 2023, regular meeting as submitted.

Ayes, Heather Carmona, Susan Collins, Pam Graham
Sarah Kupczyk, Anne Lipp, John Rusche
and Steve Sweeney

Nays, None
Absent, None

UNFINISHED BUSINESS:

No unfinished business

NEW BUSINESS:

Parks and Recreation Master Plan-Evaluation of the Current Plan Goals and Objectives

Jane Dixon from McKenna presented to the Parks and Recreation Board the progress of the Parks and Recreation Master Plan which is shown in exhibit A.

Dixon moved into the Goals and Objectives Exercise with the Parks and Recreation Board members. The Parks and Recreation Board members ranked their goals and objectives.

Carmona commented that none of these goals are really mutually exclusive. So by ranking or eliminating, it means there the board is trying to look at how to be most efficient and all encompassing. Eliminating anything doesn’t necessarily mean that it’s not going to be reflected in the plan elsewhere.

Dixon clarified that through the prioritization process and the discussion that is occurring with the Parks and Recreation Board, McKenna will review the feedback and synthesize that into the plan's goals. At the October Parks and Recreation Board meeting there will be further discussion on the revised goals for the plan.

Collins stated that she is hearing from young families about how there are not a lot of family restaurants and what we can do to bring more families back to Birmingham.

Burns stated that one of the Parks and Recreation Board primary goals should be to conserve and protect the city's precious park system. Do not give up a single square foot of green space in our park system. Secondly, to see a goal that says the Parks and Recreation Board will support the city and NEXT initiative with regard to a new senior Complex which adjoins St. James Park.

No Action Needed

Trail Improvements Concept Plan

PM Laird reviewed with the Parks and Recreation Board changes that have been made to the Trail Improvement Concept Plan. PM Laird stated that the plan has been reviewed by various applicable board reviews, including the Multi-Modal Transportation Board, Museum Board and the Martha Baldwin Park Board. PM Laird state that staff sustainability liaisons in addition to each of the city departments have examined this plan as well.

PM Laird stated the changes made to the Draft Concept Plan includes:

Booth Park Section:

Entry plaza: The addition of a rain garden in the swale area.

Addition of more sustainability features such as rain barrels, native plantings, utilizing chip stone, Pave Drain® block, and recycled or reclaimed products.

The addition of a Donor Bench and landscape bed. (We have a donor that would like to contribute a custom style bench, could serve as an art piece/destination selfie/photo opportunity).

Museum Section:

The addition of a boardwalk in the narrow section north of Willits street. The addition of a sidewalk along the south side of Willits street. An option for concrete pathway along Maple has been identified.

Linden Section:

The addition of a pedestrian bridge connection over the Rouge River, north of Maple, east of Baldwin. Widened 8' Sidewalk west of Baldwin, up to the Maple Rd pedestrian crosswalk.

PM Laird stated the Trail Improvements Cost Estimate totals \$2,967,990.82 , broken down into three sections: Booth Park Section: \$648,824.13, Museum Section: \$1,472,627.74, Linden Park Section: \$846,538.95. The previous cost estimate before the changes to the plan was \$2,095,531.62.

The City applied for a pre-development grant for trail improvements in the amount of \$25,000 (the maximum amount) through the Oakland County Parks and Recreation Grant Program, expected announcement early August. If awarded this will help to prepare construction drawings.

The City applied for round two of the MI Sparks Grant Program in the amount of \$350,000 for development of the Booth Park Section of the plan.

Ross Kaplan who previously was on the Parks and Recreation Board for sixteen (16) years and also the co-chair for Booth Park community built came up to the microphone and spoke.

Kaplan is concerned about the location the restroom which is front and center of the park and it will be a feature from not only the street, but also as an entrance to the park and there is a lot of underground and having it hidden with planters will reduce the path from 10ft. to 4ft.

PM Laird stated there is an option noted in the cost estimate to move the restroom into the Booth Park, further south.

Lipp thought the changes to the plan was very well done.

It was moved by Lipp, seconded by Graham, to support the Trail Improvement Concept Plan and recommending that the plan be presented to the City Commission for acceptance.

Ayes, Heather Carmona, Susan Collins, Pam Graham
Sarah Kupczyk, Anne Lipp, John Rusche
and Steve Sweeney

Nays, None
Absent, None

Crestview Pickleball Courts-Sound Mitigation

PM Laird stated due to residential complaints associated with Pickleball, the City Manager requested the Department of Public Services review sound mitigation practices and requests the Parks and Recreation Board review potential sound mitigation options provided by staff, and recommend appropriate prioritization and implementation of such avenues.

PM Laird stated that her and Brendan McGaughey, Parks & Forestry Foreman visited Grosse Pointe Shores where "Acoustifence®" is currently in use around one side of the single pickleball court, where they also require the use of "quieter" pickleball paddles and balls. A noise reduction was noticeable outside of the Acoustifence®. Difficulty of enforcement was also noted of the required equipment.

PM Laird stated unofficial decibel readings with a smartphone app were taken outside of the Crestview Park pickleball courts, and the highest achieved decibel level was 75 dB during some singular hits to the ball. Note that noise levels are not consistently at 75 decibels, other studies have shown an average of 70 dB over the course of a pickleball match.

If "Acoustifence®" alone was in place, this should reduce the noise by approximately 10 dB, to 65 dB (which is about as loud as an electric shaver) or 60 dB average over the course of a match (about as loud as a normal conversation). See the attached chart published by Yale University for more examples.

PM Laird stated the potential options are:

Option #1: Install "Acoustifence" (1/8" Paneling) Along Southern Fence
Estimated Cost: \$924 per 6' curtain/panel, 146' total: \$25,000-\$30,000 (with installation)

Pros: Timely, approximate 10-12dB reduction outside of the noise restricted area, green
Cons: Will restrict airflow and visibility, not aesthetically pleasing, moderate cost

Option #2: Require Sound Muffling Paddles

Estimated Cost: \$100-\$149 each

Pros: Timely, low cost

Cons: Still creates high-pitched sound, additional maintenance to restock City supplied paddles (if any), unable to constantly monitor

Option #3: Require Sound Restricting Balls *(ex. ONIX Fuse G2, not foam)

Estimated Cost: \$3/each

Pros: Timely, low cost

Cons: Still creates high-pitched sound, additional maintenance to restock City supplied balls (if any), unable to constantly monitor *Still plastic balls, foam balls are the least noisy but not recommended for use outdoors

Option #4: Install Berm and Landscaping

Estimated Cost: \$7,500-\$15,000

Pros: Green solution, pleasing aesthetics, long-term noise reduction

Cons: Ineffective on its own, not irrigated, additional maintenance for DPS staff

Option #5: Completely enclose the pickleball courts with additional 12' fencing and a lockable gate, along with noise reduction paneling, require key FOB for membership/entry

Estimated Cost: \$125,000+ and annual administration costs of selling memberships, etc.

Pros: Highest achievable noise abatement Cons: Expensive, low visibility, permanent electrical and fencing modifications required, courts would need to close during construction, additional maintenance and labor for membership sales required

Sweeney asked do we have to, are we as a board required to do some form of change? It's clear the pickleball courts are overwhelmingly popular for the city, it's popular everywhere. And the requested changes are for 5% of the residents nearby.

Sweeney stated that option #1 with landscaping would be acceptable. Kupczyk suggested option #2 and #3 would be low cost and for option #1 could arborvitaes on the south side or a mural on a fencing.

Graham suggested that option #1 makes sense and installing it on the south side and berms and landscaping should be investigated for future installations.

DPS Director Zielinski stated that complaints have been coming in on hours, noise, drivers turning around in driveways.

Kaplan stated that option #4 could be used as a test.

Nolan Thomas stated he plays at Crestview Pickleball courts. He stated it's a constant noise no different than a train going by. Thomas stated putting the entrance on the opposite side and rack holder might be a better location. Thomas stated requiring different paddles will not work. The safety of the children, cars and location of the entrance would be cheaper than what the options that were given.

It was moved by Sweeney, seconded by Graham that the City of Birmingham will continue to monitor the noise levels and to evaluate options for the future. But at this time the Parks and Recreation Board will not be moving forward with any of the recommendations.

Ayes,

Heather Carmona, Susan Collins, Pam Graham
Sarah Kupczyk, John Rusche and
Steve Sweeney

**Nays,
Absent,**

Anne Lipp
None

DPS Director Zielinski stated the complaints regarding pickleball will be provided at the September Parks and Recreation Board meeting.

DPS Director Zielinski stated that the Parks and Recreation Board information will be provided to the city manager's office.

MISCELLANEOUS COMMUNICATIONS:

No miscellaneous communications

REPORTS FROM STAFF:

No reports from staff

ITEMS FOR NEXT MEETING:

No items for next meeting

Carmona stated the next regular meeting will be held on Tuesday, September 12, 2023 at 6:30 pm, at 851 South Eton.

Chair Carmona adjourned the meeting at 8:42 pm

Connie J. Folk, Recreation Coordinator



BIRMINGHAM

Parks and Recreation
MASTER PLAN

2024-2028

Parks and Recreation Master Plan for Birmingham, MI

Parks and Recreation Board · August 1, 2023



MCKENNA

Exhibit A

Agenda

Introduction

Strategic Plan Issues:

- Demographic Findings
- Sustainability
- Inclusivity

Community Engagement: What We've Heard So Far

Exercise: Goals and Objectives





Introduction

MCKENNA

Why Plan?

- MDNR requires that plans be updated every 5-years.
- Provides a roadmap for parks and recreation decisions over the next 5-years, as well as long-range planning of projects.
- Address Birmingham's current and future parks and recreation needs.
- Ensure the City is eligible for MDNR acquisition and development grants.
- **Create an authentically community-supported vision!**



How is a Parks Plan Used?

These plans ARE used:

- To communicate values
- To create historical record of parks and recreation public input
- To determine areas for further exploration
- To make the City eligible for grants

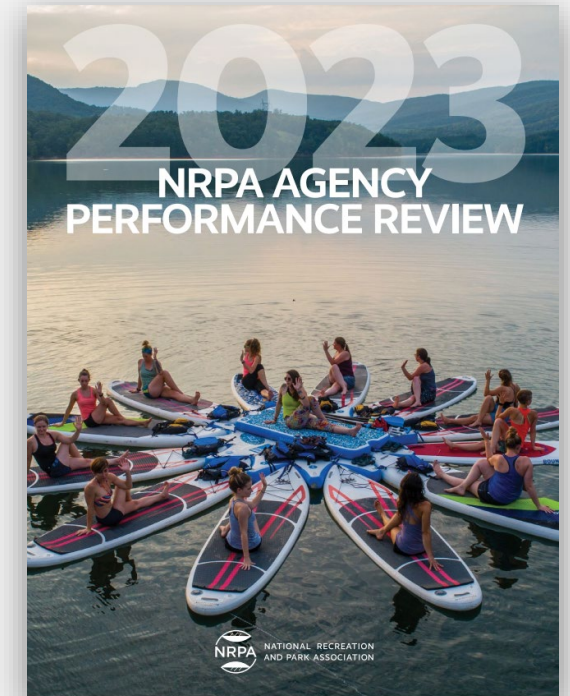
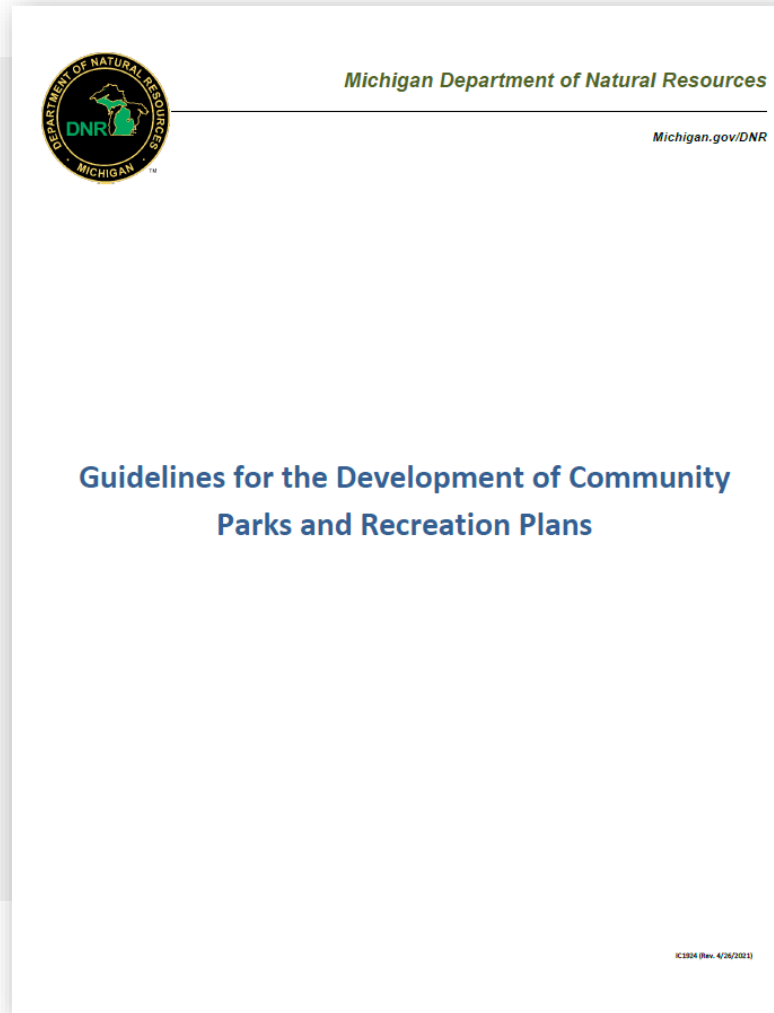
These plans ARE NOT used:

- As means of obligating funding
- To set programs in stone
- To create inflexible policies

MDNR Requirements and Key Metrics

Required Components:

1. Community Description
2. Administrative Structure
3. Recreation Inventory
4. Natural Resource Inventory
5. Systems and Facilities Analysis
6. The Planning Process
7. Strategic Action Plan



The Plan's Updated Table of Contents (TOC)

01. Executive Summary

02. The Birmingham Community Today

- ✓ Demographic Findings

03. Administrative Structure and Funding

04. Parks, Recreation and Trails Inventory

- ✓ Regional Facilities
- ✓ Natural Features
- ✓ Programming

*05. Formulating a Vision

- ✓ Goals and Objectives
- ✓ Public Engagement Summary

*06. Basis for the Action Plans – Systems and Facilities Analysis

- ✓ Amount / Condition of Facilities
- ✓ Sustainability
- ✓ Inclusivity and Access

07. Strategic Action Plans



Strategic Plan Issues

MCKENNA

Key Demographic Findings and Implications

Households with children are expected to slightly decrease by 2050.

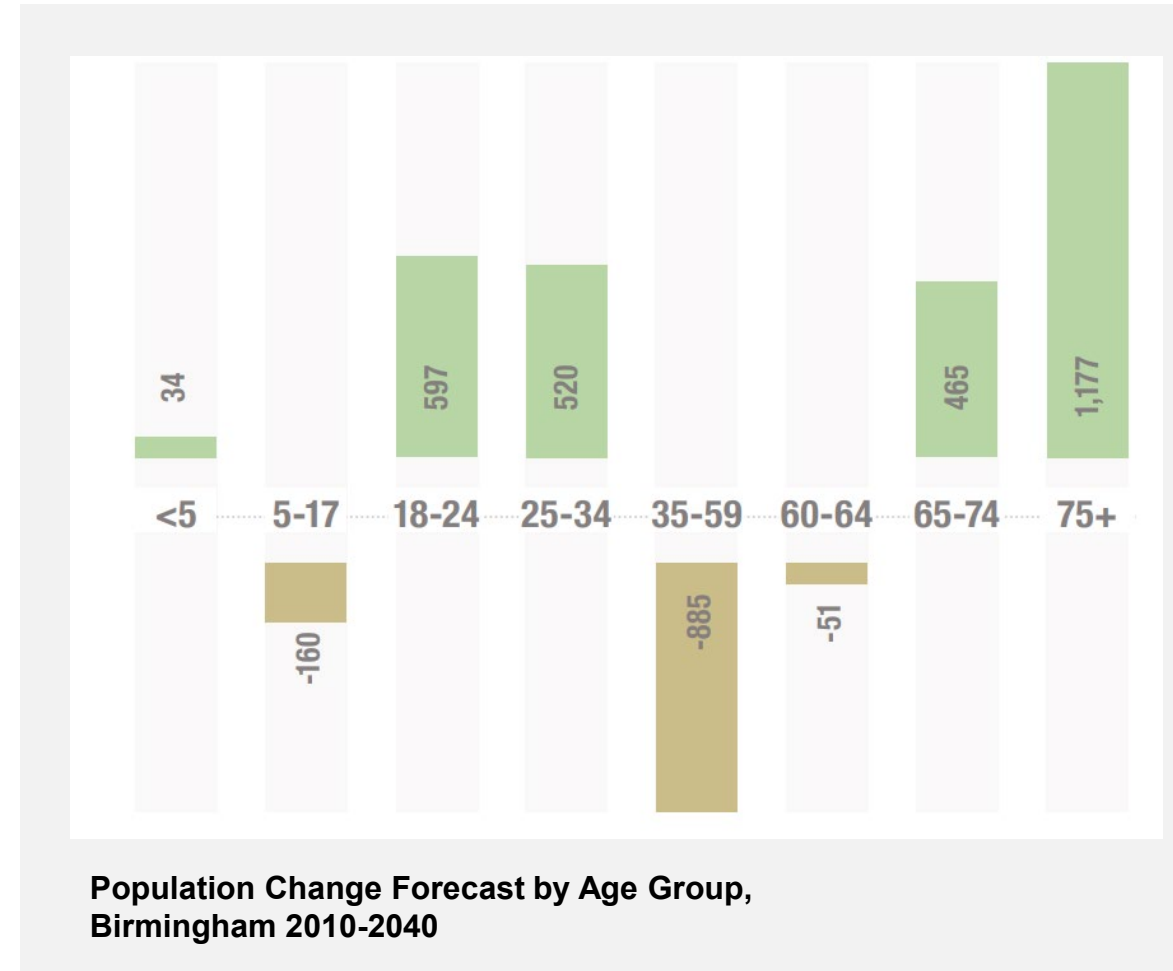
Youth are the largest users of park facilities and are likely to participate in organized sports and recreation programming.

Birmingham has an aging population.

People 60 and up make up approximately 25% of the City's population.

Approximately 12.8% of the City's population has a disability.

The most prevalent disabilities within the City are ambulatory and independent living difficulties.



Sustainability in Parks

How is sustainability being addressed in Birmingham's Plan?

Climate.

Addressing the negative effects of a warming climate.



Life Cycle.

Addressing how parks can change their construction and maintenance practices to lower the impact on the environment.



Ecosystem.

Addressing how parks can support native plants and animals and provide habitat for these species.



Low Impact Design.

Addressing how parks can be used to capture and filter stormwater.



Accessibility and Inclusion in Parks

How is inclusivity and accessibility being addressed in Birmingham's Plan?

Whole Environment.

Addressing all components of the environment:

- Access
- Landscaping
- Gateways
- Fencing
- Seating
- Equipment

Whole Person.

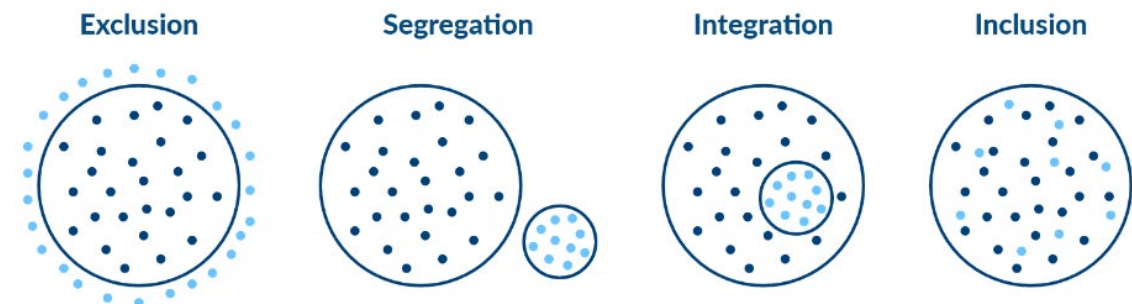
Addressing all components of a person:

- Physical
- Social-Emotional
- Sensory
- Cognitive
- Communication

Universal Design.

Addressing all components of use:

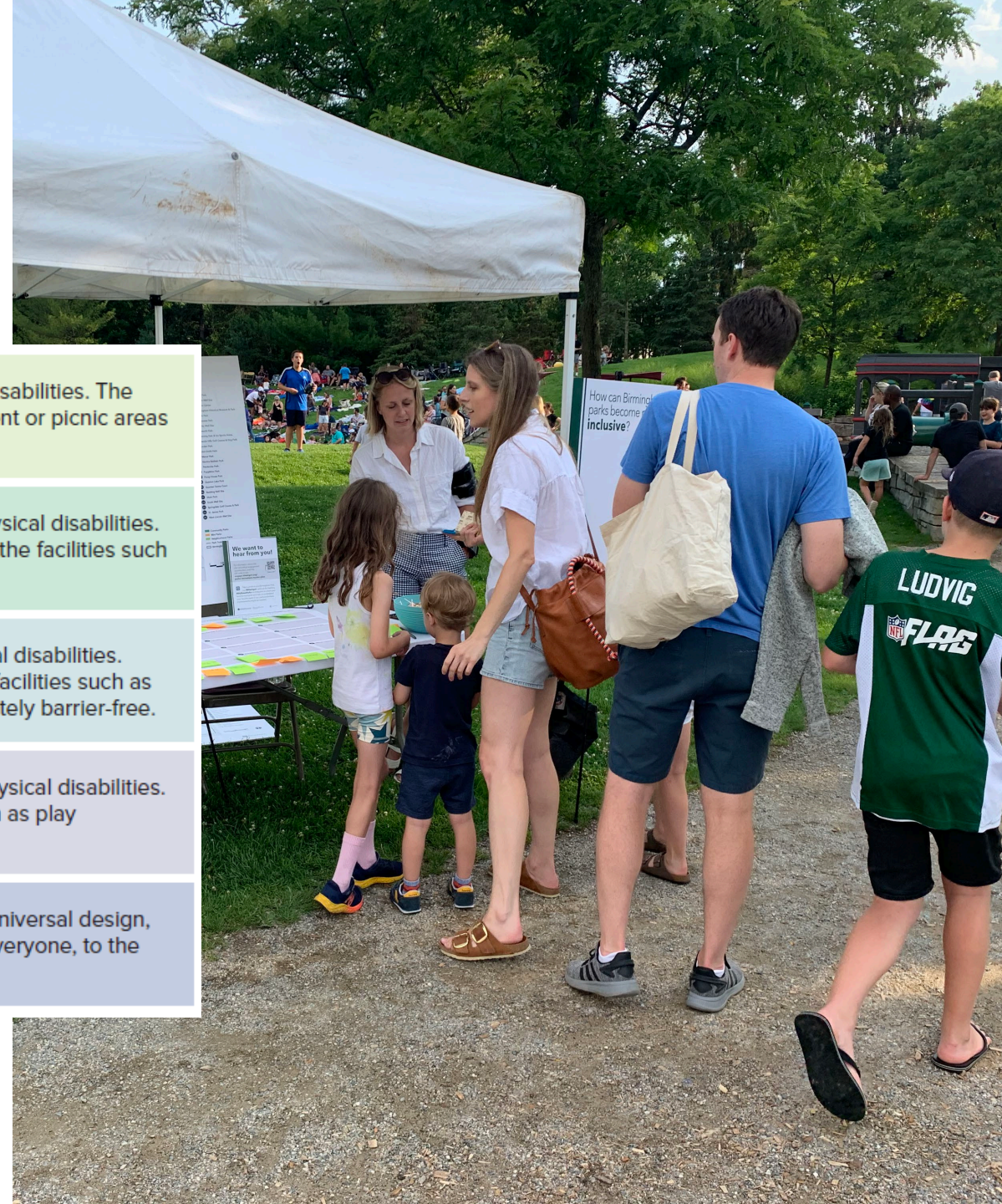
- Equitable Use
- Flexibility in Use
- Simple and Intuitive Use
- Perceptible Information
- Tolerance for Error
- Sized Appropriately
- Spaced Appropriately



Accessibility Scale

How Park Accessibility is rated by the MDNR:

Level 1	The park is not accessible to people with a broad range of physical disabilities. The site includes little paved areas and the facilities such as play equipment or picnic areas are not easily accessible.
Level 2	The park is somewhat accessible to people with a broad range of physical disabilities. Either the parking area or pathways are paved, but not both. Many of the facilities such as play equipment or picnic areas are not easily accessible.
Level 3	The park is mostly accessible to people with a broad range of physical disabilities. Most of the parking areas and pathways are paved, and some of the facilities such as play equipment or picnic areas are accessible but may not be completely barrier-free.
Level 4	The park is completely accessible to people with a broad range of physical disabilities. Parking areas and pathways are paved, and most of the facilities such as play equipment or picnic areas are easily accessible.
Level 5	The entire park was developed or renovated using the principles of universal design, a design approach which enables all environments to be usable by everyone, to the greatest extent possible, regardless of age, ability, or situation.

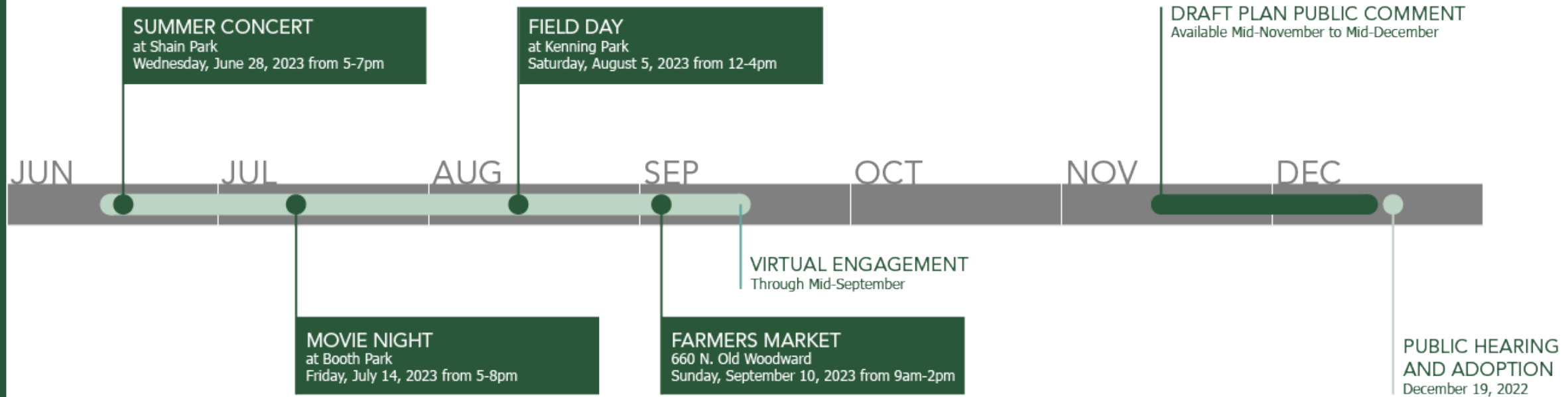




Community Engagement: What We've Heard So Far

MCKENNA

Engagement Timeline



Concert Series and Movie Night

What's Working?

- ✓ Residents love the parks!
- ✓ Quantity and quality of amenities

What's Not Working?

- ✓ Older play equipment
- ✓ Lack of walking paths

Key Ideas:

- ✓ Splash Pad
- ✓ Shaded Seating



Online Feedback

As of July 28, 2023



211 Unique Website Visitors



85 Survey Responses



25 Comments on Map

We want to hear from you!

For information about the plan and virtual engagement opportunities, scan the QR code or visit engage.bhamgov.org/parks-recreation-master-plan

Scan me!

Take a photo in any Birmingham Park, tag **@bhamgov**, and use the hashtag **#MyBhamParks** on Instagram to share your favorite moments and help us understand your favorite parts of our parks and where improvements might be needed.

BIRMINGHAM | Parks and Recreation
MASTER PLAN

MCKENNA

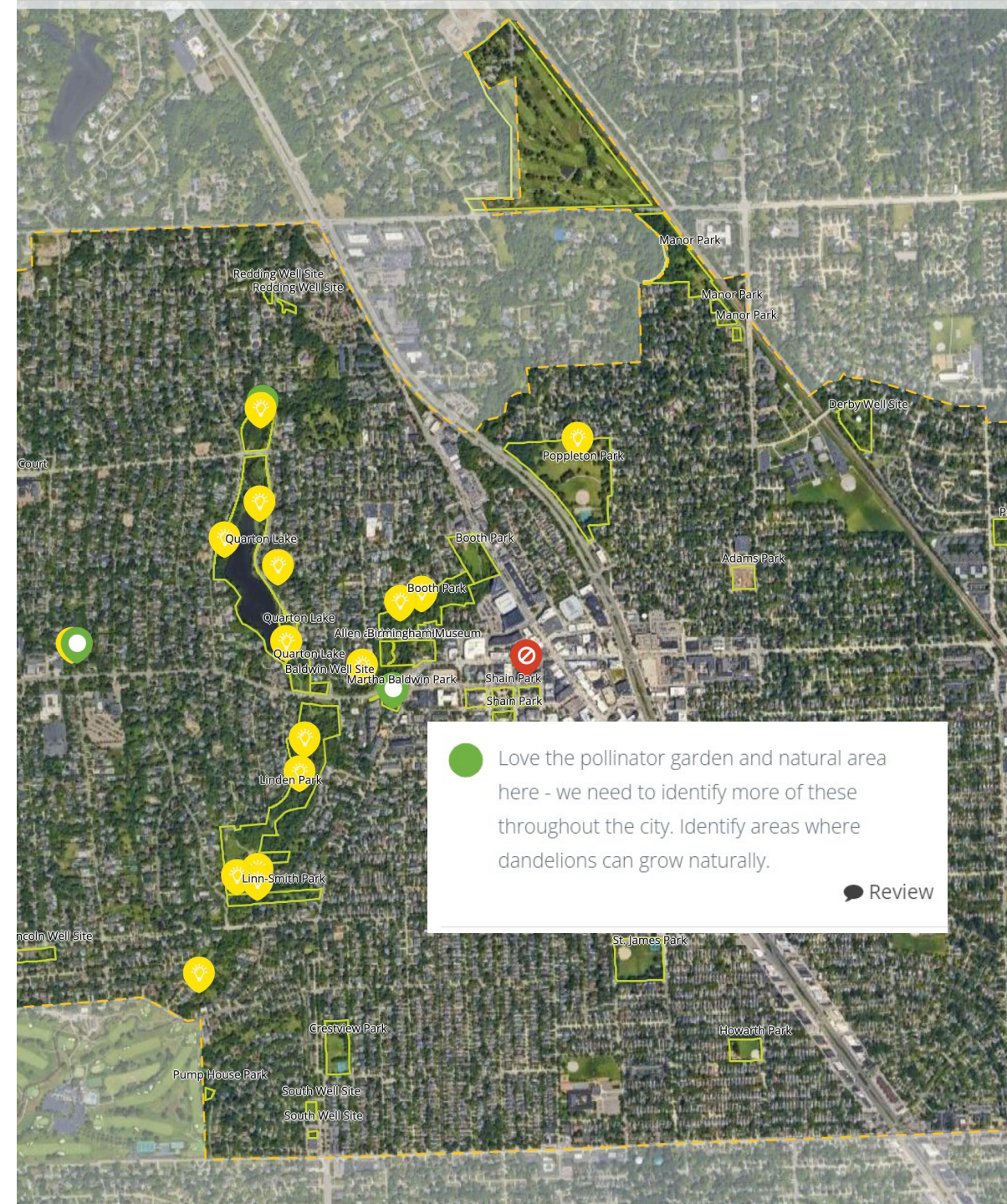
Online Feedback: Comment Map

Desired Park Amenities:

- Bridge over Rouge to connect Lynn-Smith with Linden
- Demonstration sites for pesticide-free areas

Similar to in-person engagement, comments regarding:

- Need for more walking paths
- Desire for pavilions/covered shade areas
- Dislike off-leash dogs in parks



Online Feedback: Flash Survey

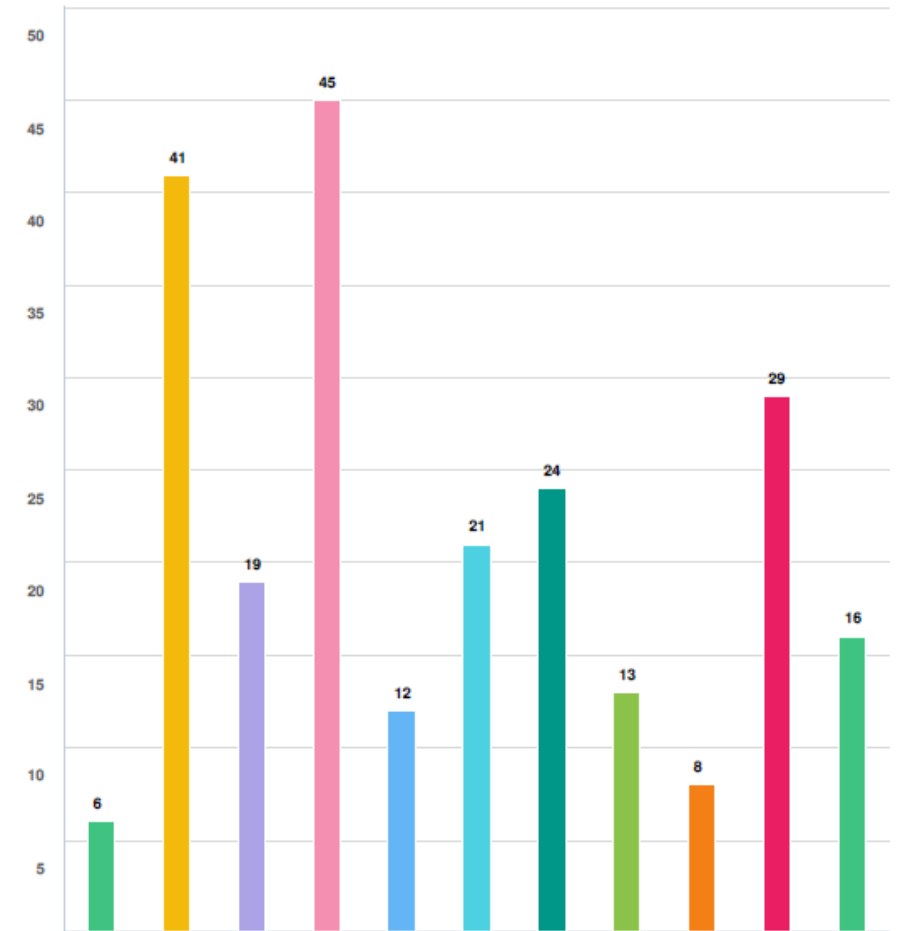
Desired New and Enhanced Opportunities:

- Walking Paths
- Restrooms
- Adult Fitness/Wellness

Items Needing Improvement:

- Programs for people with disabilities
- Environmental/nature education
- Naturalized areas

Q2 What new or enhanced opportunities would you like to see within the City?



Question options

- Volleyball
- Restrooms
- Community Garden
- Walking Paths
- Programs for People with Disabilities
- Permanent Yard Games (corn hole, chess, shuffleboard, etc.)
- Natural Resource Management
- Youth Fitness/Wellness
- Disc Golf
- Adult Fitness/Wellness
- Other (please specify)

Parks Board Feedback Received

- Seek inspiration for creative recreation opportunities (yard games, universal design in playgrounds, outdoor fitness stations, etc.).
- Engage environmental advisory and watershed groups.
- Utilize parks to pilot sustainability programs.
- Provide environmental programming.



A photograph of a park scene with a dark green overlay. In the foreground, two women are standing on a sandy area. One woman is wearing a light-colored jacket and dark pants, while the other is wearing a long, light-colored coat. In the background, there are trees, a wooden bench, and two strollers. The text "Exercise: Goals and Objectives" is overlaid in white on the left side of the image.

Exercise: Goals and Objectives

Ranking the Current Goals and Objectives

GOAL #1: Foster an inclusive and unique community.

GOAL #2: Provide parks and recreation facilities that are beautiful and high quality, that respect history, offer a variety of experiences, both passive and active, are well maintained and that are accessible to all residents of the community.

GOAL #3: Create a community of healthy residents by providing opportunities that promote and encourage active lifestyles and mobility.

GOAL #4: Provide recreation programming and facility opportunities that meet the needs and interests of the entire community.

GOAL #5: Use existing community resources efficiently and to demonstrate fiscal responsibility and to coordinate and partner with other entities to ensure the availability and opportunity for comprehensive, quality services and facilities.

GOAL #6: Become a leader in sustainable, innovative maintenance practices to protect our natural community resources, demonstrate environmental stewardship and reduce adverse health effects to all residents, while maintaining public use, access, and enjoyment.

GOAL #7: Operate the Department of Public Services in an effective and efficient manner so as to maintain a high level of customer service.



2800 Watkins Lake Road • Bldg 97W
Waterford, MI 48328-1917
248-858-0906 • 1-888-OCPARKS
OaklandCountyParks.com

Carrie Laird
Parks & Recreation Manager
City of Birmingham
851 S. Eton
Birmingham, Michigan 48009



E-mail transmittal on: August 16, 2023

Dear Carrie Laird:

Congratulations! The Oakland County Parks and Recreation Commission (OCPRC) and the Oakland County Board of Commissioners (BOC) have approved the following grant from the 2023 Community Park and Trail Capital Grant Program:

City of Birmingham
Trail Improvements - Booth Park Section
\$25,000

Oakland County Parks is pleased to partner with your community on this excellent project and looks forward to learning about your plans and progress.

Funding for the Community Park and Trail Capital Grant Program has been made possible through the support of the Oakland County BOC and the voters of Oakland County via their support of the OCPRC. This initiative will be reviewed on an annual basis by the Parks Commission to determine future grant funding availability and procedures.

A grant acceptance agreement is being finalized and will be forwarded to you in the coming weeks.

Congratulations again and thank you for your commitment to providing excellent recreation services and facilities for the residents of your community and Oakland County.

Sincerely,

Gary R. McGillivray
OCPRC Chairman

Janet Jackson
Oakland County Commissioner

Yolanda Smith Charles
Oakland County Commissioner

The Oakland County Parks and Recreation Commission:

Gary R. McGillivray - Chairman, J. David VanderVeen - Vice Chairman,
Ebony Bagley - Secretary, Christine Long - Executive Committee Member
Yolanda Smith Charles, Amanda Herzog, Andrea LaFontaine, Jim Nash, Nancy L. Quarles, E. Lance Stokes
Chris Ward - Parks Director



MCKENNA

Memorandum

TO: City of Birmingham Parks and Recreation Board
FROM: Paul Urbiel, AICP, Jane Dixon, AICP, and the McKenna Team
SUBJECT: **Agenda for Parks and Recreation Master Plan Discussion at the September 12, 2023 Board Meeting**
DATE: September 7, 2023

We look forward to providing an update of planning activities and progress toward the Parks and Recreation Master Plan draft with you at the September 12 Parks and Recreation Board meeting! During the meeting, we will briefly summarize progress and recent activities regarding the items below and be available to answer any questions.

EXECUTIVE SUMMARY

I. Updated Goals and Objectives

At the August Board meeting, members provided feedback regarding modifications of the previous Plan's goals and objectives to reflect the current reality and priorities. The planning team has incorporated that feedback, and enclosed in this memo is a rewritten statement of goals and potential objectives for your review.

II. Facilities Inventory and Analysis:

a. National Benchmarks

As a requirement of the MDNR's guidelines for recreation plans, we have completed a comparison of Birmingham's facilities with national benchmarks for provision of facilities. In 2020, the National Recreation and Parks Association (NRPA) introduced a nationwide benchmarking tool known as NRPA Park Metrics. Each year, NRPA releases the Agency Performance Review, summarizing benchmarking data from 1,000 park and recreation agencies in the Park Metrics database. This database categorizes data by the size of the served jurisdiction. NRPA Park Metrics offers a comparison of Birmingham's parks and recreation facilities with data from similar-sized communities, providing a valuable perspective. This data is a foundation and will be complemented by community-specific insights and experiences to determine the best combination of facilities.

b. Accessibility

The planning team has completed the inventory of all of Birmingham's Parks and Recreation facilities. The inventory focused on firsthand observation and data collection regarding equipment and facility availability and condition (used to inform the National Benchmarks analysis mentioned above), accessibility of parks and equipment (as well as initial thoughts about opportunities for enhancement of accessibility and inclusion at each park), and existing conditions regarding certain sustainability topics. Enclosed in this memo is a summary of the accessibility scores of the existing parks, as well as summary comments regarding major deficiencies and opportunities.

HEADQUARTERS
235 East Main Street
Suite 105
Northville, Michigan 48167

☎ 248.596.0920
☎ 248.596.0930
MCKA.COM

New Business #3

Communities for real life.



Accessibility at Birmingham parks overall benefits from the recent renovations and high level of maintenance in the park system. Except for the mini parks, Birmingham parks are generally easy to find, navigate and enter. Newly-constructed and renovated facilities are naturally higher-scoring, as laws and considerations regarding inclusiveness in public space design has evolved. There are distinct opportunities to improve.

We will continue to formulate and refine recommendations as the draft plan is finalized. A sample of accessibility-related opportunities gleaned from the inventory, and informed by feedback received in this process, include:

- Provide additional walking paths with benches and places to rest.
- Enhance access to restrooms in parks.
- Enhance wheeled access to individual equipment. (Parks are generally easy to enter, but individual equipment is often not completely accessible within the park).
- Provide inclusive play equipment at more park locations.
- As mini parks are dedicated, formalize them with signage and make them easier to find.
- Communicate park offerings and amenities more effectively.

c. *Walkability and Service Area Mapping*

To frame and inform recommendations, our team first analyzed the location of park facilities through the lenses of walkability and community composition (especially age, to consider walkability and amenity provision for children and senior citizens). This analysis will guide plan recommendations and can serve as a reference tool for future capital expenditures and decisions regarding equipment provision. This analysis aligns and reinforces previous planning efforts' recommendations regarding underserved neighborhoods and populations, especially west of Woodward.

The following maps are included:

- Walkability Analysis, showing walksheds of 5, 10, and 15 minutes from all parks
- Population of Children by Census Block Group, overlaid with a 5-minute walk from parks and current play equipment provision for populations:
 - 0-4
 - 5-9
 - 10-14
- Population Over Age 65 by Census Block Group

d. *Individual Park Summary Draft Pages*

Included in this memo for your reference and comment are draft example pages of individual parks profile pages. These pages are designed to effectively communicate summary information about each facility. Importantly, we are also designing the summary pages to be easily adaptable into an enhanced public-facing resource to enhance understanding and knowledge of what facilities are available and where.



III. Public Engagement Update

Since the August board meeting, we have:

- Conducted another Field Day (August 5 at Kenning Park), with the last Field Day scheduled for September 10th at the Farmers Market.
- Conducted roundtable discussions with 7 separate stakeholder cohorts seeking their input on strategic issues, desired priorities for the parks and recreation system, and certain cohort-specific discussions. We also conducted 1:1 follow-up interviews with stakeholders who desired to participate but were unable to attend. A summary of priority issues identified in these sessions is included in this memo.
- Continued to collect survey results through the publicly-available survey. As of this writing, 173 completed responses have been received. We will close the survey on September 18th to allow for additional responses after we've had a chance to 'advertise' the survey in person at the Farmers market on September 10th.

Full analysis of the public engagement process will be included in a future update.

IV. Next Steps

Following the September 12th meeting, the planning team will complete and begin final analysis of the public engagement process. The public survey will close on September 18th. We will also continue to develop plan recommendations and content. Key future dates include:

Tuesday, October 3 at 6:30 PM, DPS Conf. Room Draft Content Review with Parks and Recreation Board
Tuesday, October 24 at 6:30 PM, DPS Conf. Room <i>*Special Meeting</i> Final Draft Review with Parks and Recreation Board #4
30-Day Public Review and Comment Period <i>November 1 – December 4</i>



I. UPDATED GOALS AND OBJECTIVES

Goals and Objectives

Goal #1:

Provide parks and recreation facilities that are accessible to all residents of the community, are beautiful and high quality, that respect history, and offer a variety of experiences, both passive and active.

OBJECTIVES:

1. Improve universal accessibility.
2. Maintain and improve designated wetlands, Rouge River Corridor, and open space.
3. Incorporate art/sculptures into park design.
4. Encourage central entry areas for sitting and gathering in park design.
5. Maintain and update park equipment and facilities as needed, such as playground equipment, ball fields, open space areas including natural landscaping.
6. Continue implementation of standardized park design for all City of Birmingham Parks including signage, installation of trees, tree transplanting, improved landscaping, benches, bike racks, and waste receptacles.
7. Standardize park features that ensure there is continuity between parks and regional systems.
8. Review Parks and Recreation Master Plan quarterly to establish priorities and responsibilities with Parks and Recreation Board.
9. Update the Parks and Recreation Master Plan every five years to maintain a current assessment and ensure grant funding eligibility.

Goal #2:

Foster a connected and healthy community by providing recreational programming and facilities that address the varied needs and interests of residents, while actively promoting and facilitating an active lifestyle and enhanced mobility.

OBJECTIVES:

1. Increase non-motorized transportation connections between parks, historical sites, community facilities and shopping districts that allow residents to cycle, walk, and run safely.
2. Develop and promote programming that encourages active lifestyles for all ages.
3. Work with Oakland County to develop pathway connections with surrounding communities that include Beverly Hills, Bloomfield Hills, Bloomfield Twp., Royal Oak, Southfield, and Troy with the existing Rouge River Corridor.
4. Promote the establishment of the Rouge River Corridor along the Rouge River to encourage the preservation, enhancement and increase community understanding of this important watershed.
5. Develop a wayfinding program for the trail / greenway network that directs users of the non-motorized paths to City parks and other destinations.
6. Monitor the use of athletic fields and facilities to determine additional needs.
7. Create opportunities that go beyond the traditional team sports such as educational components, individual sporting pursuits, training/ self-improvement courses.

Goal #3:

Prioritize partnerships with other entities to ensure comprehensive, quality programs and facilities, while promoting the efficient use of existing community resources.

OBJECTIVES:

1. Explore opportunities with private partnerships and Oakland County Parks to jointly provide desired services and facilities, while minimizing duplication and competition between the agencies.
2. Coordinate efforts with Oakland County and Friends of the Rouge for opportunities to preserve open space and provide public access along the Rouge River Corridor.
3. Strengthen partnership with the Arts Board regarding public art at parks.
4. Continue working with local organizations, clubs, and institutions to provide a wealth and variety of organized activities and programs within the community. This includes:
 - a) Senior Walking Clubs.
 - b) "Theatrical" programming that involves schools, library, residents, and the Community House.
 - c) Seasonal, including winter activities.
 - d) Art and cultural programs.
 - e) Teen and youth programming during the summer and utilizing extended hours.
 - f) Family activities.
5. Provide volunteer opportunities in program delivery and improvement projects.
6. Partner for grants & outside funding.
7. Foster, promote and encourage cooperative relationships with public and private entities.
8. Promote a system for people to approach the city with ideas to collaborate on park improvements.
9. Increase opportunities for donation, sponsorships, and fundraising efforts.

Goal #4:

Strive to become a leader in sustainable and innovative maintenance practices within our community, with a comprehensive commitment to protecting our natural resources, showcasing environmental stewardship, and minimizing adverse health effects on all residents. With the mission to harmonize public use, access, and enjoyment of our parks while addressing four key pillars of sustainability.

OBJECTIVES:

1. Enhance climate resilience in parks and green spaces by increasing tree canopy cover, promoting heat-resilient infrastructure with cooling features, and educating the community about parks' vital role in climate mitigation and temperature regulation.
2. Advance sustainability in park development by implementing eco-friendly construction practices, adopting low-maintenance landscaping, embracing nature-conscious designs, and continuing to research best practices for infrastructure maintenance to reduce the environmental footprint.
3. Foster biodiversity in parks by promoting native plant use, creating wildlife-friendly habitats, implementing conservation initiatives, and collaborating with local organizations to conduct biodiversity assessments and habitat restoration projects.
4. Integrate and promote low-impact design strategies in park planning, development, and maintenance to effectively manage stormwater, improve water quality, raise community awareness, and ensure long-term environmental benefits.
5. Develop an interpretive signage program in parks to expand educational opportunities about environmental protection.
6. Create demonstration projects within parks to showcase native Michigan plants and promote appreciation for natural landscape techniques.
7. Implement a pilot "Pesticide Free Park" program at a City Park.
8. Develop maintenance Design Guidelines for future capital and park improvements that encourage low maintenance alternatives.
9. Reduce and minimize usage of chemicals in all parks to lessen the potential for adverse health effects to the extent that is practicable.

Goal #5:

Increase park accessibility to underserved areas, while preserving and enhancing current facilities.

OBJECTIVES:

1. Formalize and dedicate informal park spaces (especially in) underserved areas.
2. Utilize Planning Districts from 2040 Plan to guide the investigation of land acquisition of land for new park spaces, and consideration of activities for all seasons.
3. Celebrate the community with participation in festivals, community functions and events.
4. Support and encourage new developments to include areas for active and passive recreation.
5. Enhance entry points for existing parks that promote awareness of park access.

Goal #6:

Improve public understanding of, engagement with, and utilization of the parks and recreation system.
(New Goal)

1. Create mechanisms to enhance communications and increase awareness of Birmingham parks and recreation offerings.
2. Integrate technology with operations to increase access and efficiency of services.
3. Evaluate existing methods of publicity and outreach to identify potential improvements.



II. FACILITIES INVENTORY AND ANALYSIS

a. National Benchmarks

Table 4: Facilities Analysis

Facility Type	Percent of Agencies that Provide Facility	Presence of Facility In Birmingham	Median Number of Residents/ Facility	Number of Facilities	
				Benchmark	Currently In Birmingham
OUTDOOR FACILITIES					
Playgrounds	95%	Yes	3028	7	9
Tot Lots	48%	Yes	11,195	2	10
Basketball Courts	86%	Yes	7117	3	4
Tennis Courts	76%	Yes	5,815	4	14
Pickleball Courts	31%	Yes	9,257	2	6
Volleyball Courts	49%	Yes	14,800	1	0
Softball Diamond	62%	Yes	11,802	2	3
Regulation Ballfield	55%	Yes	20,228	1	1
Ballfields (youth)	79%	Yes	19,556	1	5
Rectangular Fields:					
Multipurpose	69%	No	7,674	3	0
Soccer (youth)	51%	Yes	4,947	4	6
Football	35%	No	18,785	1	0
Multipurpose - Synthetic	25%	No	25,330	1	0
Dog Parks	68%	Yes	28,000	1	1
Swimming Pool (outdoor)	51%	No	25,191	1	0
Community Gardens	52%	No	26,741	1	0
Skate Parks	41%	Yes	32,000	1	1
Ice Rinks (outdoors)	18%	Yes	13,247	2	1*
Golf Course (18-hole)	29%	Yes	32,990	1	2**
INDOOR FACILITIES					
Recreation centers (including gyms)	63	No	24,380	1	0
Community centers	59	No	26,696	1	0
Senior centers	41	No	31,199	1	0
Performance amphitheatres	37	No	30,283	1	0
Nature centers	33	No	32,000	1	0
Aquatic centers	28	No	31,645	1	0
Stadiums	20	No	31,000	1	0
Teen centers	13	No	31,645	1	0
Indoor ice rinks	12	Yes	24,838	1	1
Arenas	8	No	24,626	1	0

*Not mechanically chilled **Springdale is 9-holes



FACILITIES INVENTORY AND ANALYSIS

b. Accessibility

Accessibility Assessment

The American Disabilities Act of 1990 (ADA) requires all areas of public service, including parks and recreation facilities, to have barrier-free accessibility.

An evaluation of Birmingham’s parks and recreation facilities was conducted as part of the inventory in the summer of 2023. In accordance with the Michigan Department of Natural Resources requirements, facilities were evaluated to determine if a person with any of the following criteria can safely and independently access and use the park or facility:

- » Has limited sight or is blind
- » Uses a wheelchair
- » Has a hearing impairment or is deaf
- » Uses a walking aid
- » Has a mental impairment

A five-point evaluation system was used to rank each facility’s accessibility; the system is described in the table below, and the accessibility rankings are detailed in the table that follows.

Level 1	The park is not accessible to people with a broad range of physical disabilities. The site includes little paved areas and the facilities such as play equipment or picnic areas are not accessible.
Level 2	The park is somewhat accessible to people with a broad range of physical disabilities. Either the parking area or pathways are paved, but not both. Many of the facilities such as play equipment or picnic areas are not easily accessible.
Level 3	The park is mostly accessible to people with a broad range of physical disabilities. Most of the parking areas and pathways are paved, and some of the facilities such as play equipment or picnic areas are accessible but may not be completely barrier-free.
Level 4	The park is completely accessible to people with a broad range of physical disabilities. Parking areas and pathways are paved, and most of the facilities such as play equipment or picnic areas are easily accessible.
Level 5	The entire park was developed or renovated using the principles of universal design, a design approach which enables all environments to be usable by everyone, to the greatest extent possible, regardless of age, ability, or situation.

Park Accessibility Rating

City of Birmingham, Oakland County, Michigan

September 6, 2023

LEGEND

Overall Park Accessibility Rating

- 1 (worst)
- 2
- 3
- 4
- 5 (best)

Map ID Park Name

Map ID	Park Name
1	Adams Park
2	Baldwin Well Site
3	Barnum Center
4	Birmingham Historical Museum & Park
5	Booth Park
6	Crestview Park
7	Derby Well Site
8	Howarth Park
9	Kenning Park & Ice Sports Arena
10	Lincoln Hills Golf Course & Dog Park
11	Linden Park
12	Linn-Smith Park
13	Manor Park
14	Martha Baldwin Park
15	Pembroke Park
16	Poppleton Park
17	Pump House Park
18	Quarton Lake Park
19	Quarton Tennis Court
20	Redding Well Site
21	Shain Park
22	South Well Site
23	Springdale Golf Course & Park
24	St. James Park
25	West Lincoln Well Site



Basemap Source: Michigan Center for Geographic Information, Version 17a.
Data Source: City of Birmingham, 2023. McKenna, 2023.

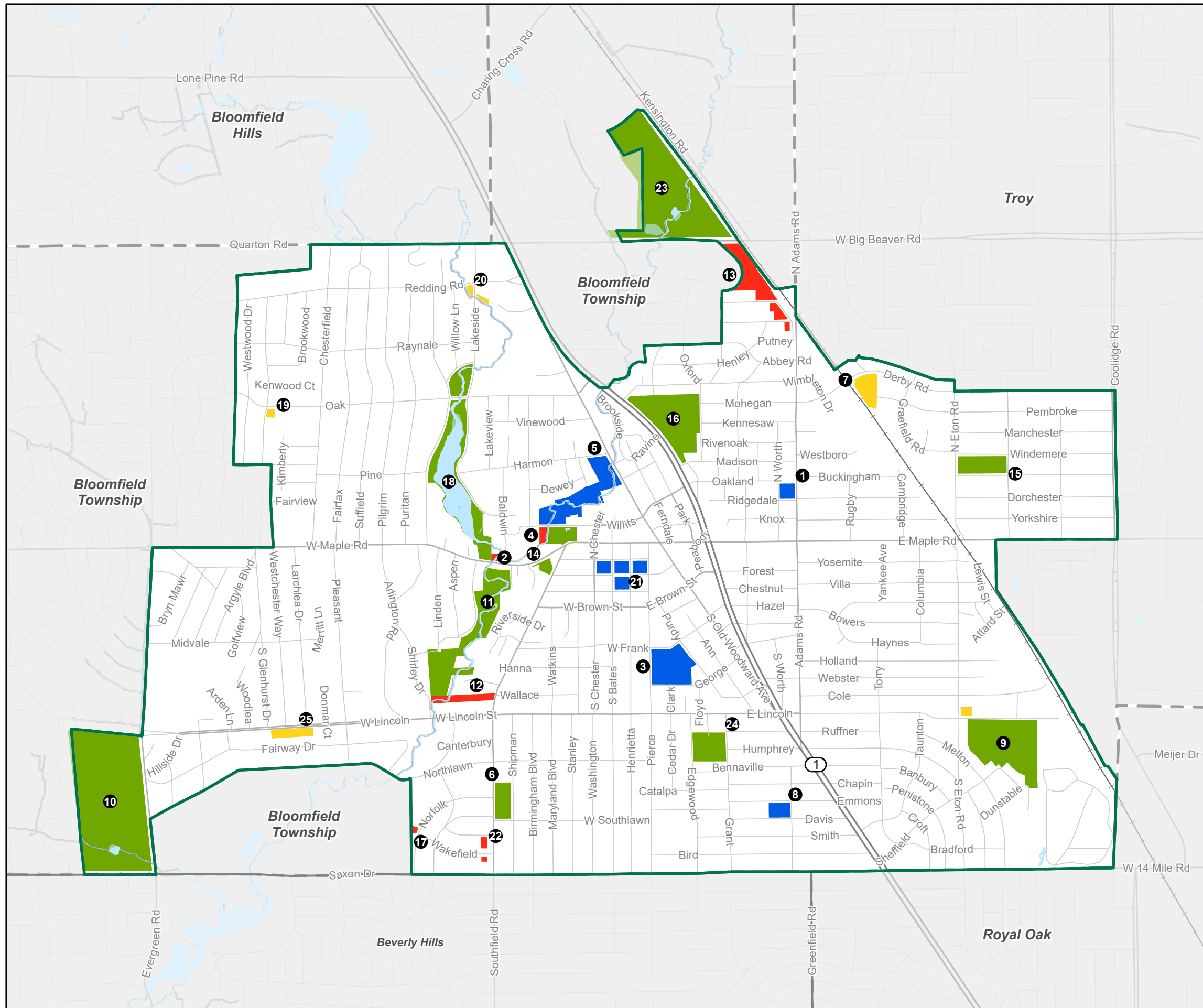


Table 5: Comments, Key Deficiencies / Opportunities

	Park Name	In General	Approach and Entrance	Navigability
Proposed Accessibility Ranking LEVEL 1	Baldwin Well Site	Opportunity for more, more accessible benches/Benches/Places to Rest. Unobstructed, pedestrian-safe entry point does not exist.	No off-street parking. No pedestrian entry.	No Signage; not Internet-searchable
	Linn-Smith Park	0 Benches/Places to Rest. Unobstructed, pedestrian-safe entry point exists.	No off-street parking.	Signage exists and is adequate.
	Manor Park	Undeveloped nature preserve; no Benches/Places to Rest, no accessible entry.	Parking spaces are not ADA-compliant / accessible.	Signage exists and is adequate.
	Pump House Park	4 Benches/Places to Rest. Unobstructed, pedestrian-safe entry point does not exist.	No clear entry into park. No off-street parking.	Signage exists and is adequate.
	Redding Well Site	Opportunity for more, more accessible benches/Benches/Places to Rest.	No accessible entrance to park.	No Signage; not Internet-searchable
	South Well Site	2 Benches/Places to Rest. Unobstructed, pedestrian-safe entry point exists.	1 ADA Parking space, with accessible path.	No Signage; not Internet-searchable
LEVEL 2	Derby Well Site	0 Benches/Places to Rest. Unobstructed, pedestrian-safe entry point exists.	No off-street parking. Accessible pedestrian entry path exists.	No Signage; not Internet-searchable
	Linden Park	Opportunity for more, accessible Benches/Places to Rest. (5 existing). Unobstructed, pedestrian-safe entry point exists.	No off-street parking. Pedestrian path is accessible.	Inadequate signage for navigation.
	Quarton Tennis Court	1 Place to Rest. Unobstructed, pedestrian-safe entry point does not exist.	No off-street parking. No accessible pedestrian path to courts.	Signage exists and is adequate. Not separately internet searchable.
	St. James Park	12 Benches/Places to Rest. No accessible paths to play equipment, access from parking lot could be improved.	2 ADA parking spaces – no accessible access aisle.	Signage exists and is adequate.
	West Lincoln Well Site	7 Benches/Places to Rest. Entry point shared with vehicles/ gravel driveway.	No off-street parking. Pedestrian path is accessible.	Signage exists and is adequate.

	Park Name	Inclusiveness for Play Areas	Activity Areas	ADA Requirements	Toilet Room
Proposed Accessibility Ranking LEVEL 1	Baldwin Well Site	N/A	N/A	No accessible paths within park.	None
	Linn-Smith Park	N/A	N/A	N/A	None
	Manor Park	N/A	N/A	No accessible paths.	None
	Pump House Park	No accessible routes to different play equipment. Shade and rest areas for caregivers exist. No inclusive play equipment.	N/A	No accessible path.	None
	Redding Well Site	N/A	N/A	No accessible paths within park.	None
	South Well Site	N/A	N/A	No accessible paths within park.	None
LEVEL 2	Derby Well Site	N/A	N/A	Pathways that exist are accessible.	None
	Linden Park	No accessible routes to different play equipment. Rest areas for caregivers exist but are not adequately shaded.	N/A	Pathways that do exist are 60" and paved, with no inappropriate slopes.	None
	Quarton Tennis Court	N/A	No accessible route to court.	No accessible path.	None
	St. James Park	No accessible routes to play areas. No inclusive play equipment. Shade and rest areas for caregivers exist.	Partial routes of entry to each area. Facilities are not accessible.	Pathways that do exist are 60" and paved, with no inappropriate slopes.	None
	West Lincoln Well Site	No accessible routes to different play equipment. Shade and rest areas for caregivers exist.	N/A	No accessible paths.	None

	Park Name	In General	Approach and Entrance	Navigability
LEVEL 3	Birmingham Historical Museum & Park	8 Benches/Places to Rest. Unobstructed, pedestrian-safe entry point exists.	1 accessible parking spaces with accessible path to facilities. Accessible ramp into building.	Signage exists and is adequate.
	Crestview Park	7 Benches/Places to Rest. Unobstructed, pedestrian-safe entry point exists.	No off-street parking. Accessible path to entrance exists but may require long travel distance in street.	Signage exists and is adequate.
	Howarth Park	11 Benches/Places to Rest. Unobstructed, pedestrian-safe entry point exists.	No off-street parking. Pedestrian path is accessible.	Signage exists and is adequate.
	Kenning Park & Ice Sports Arena	5 Benches/Places to Rest. Unobstructed, pedestrian-safe entry point exists.	7 accessible parking spaces, with accessible path.	Signage exists and is adequate.
	Lincoln Hills Golf Course & Dog Park	7 Benches/Places to Rest. Unobstructed, pedestrian-safe entry point exists.	3 accessible parking spaces with accessible paths.	Signage exists and is adequate.
	Martha Baldwin Park	3 Benches/Places to Rest. Unobstructed, pedestrian-safe entry point exists.	No off-street parking. Pedestrian path across park has stairs but no ramp.	Signage exists and is adequate.
	Pembroke Park	12 Benches/Places to Rest. Unobstructed, pedestrian-safe entry point exists.	No off-street parking.	Signage exists and is adequate.
	Poppleton Park	16 Benches/Places to Rest. Unobstructed, pedestrian-safe entry point exists.	1 ADA space with accessible aisle and entrance toward ball field; no accessible path to field.	Signage exists and is adequate.
	Quarton Lake Park	34 Benches/Places to Rest. Unobstructed, pedestrian-safe entry point exists.	Route of entry is gravel.	Signage exists and is adequate.
	Springdale Golf Course & Park	Benches/Places to Rest. Unobstructed, pedestrian-safe entry point exists.	1 accessible parking space, with accessible path.	Signage exists and is adequate.
LEVEL 4	Adams Park	9 Benches/Places to Rest. Unobstructed, pedestrian-safe entry point exists.	No off-street parking. Pedestrian path is accessible.	Signage exists and is adequate.
	Barnum Center	58 Benches/Places to Rest. Unobstructed, pedestrian-safe entry point exists.	2 accessible parking spaces, with accessible path.	Signage exists and is adequate.
	Booth Park	10 Benches/Places to Rest. Unobstructed, pedestrian-safe entry point exists.	No off-street parking. Pedestrian path is accessible.	Signage exists and is adequate.
	Shain Park	35 Benches/Places to Rest. Unobstructed, pedestrian-safe entry point exists.	2 accessible parking spaces with accessible paths.	Signage exists and is adequate.

	Park Name	Inclusiveness for Play Areas	Activity Areas	ADA Requirements	Toilet Room
LEVEL 3	Birmingham Historical Museum & Park	N/A	N/A	Accessible paths exist; northern edge of park is not accessible from parking or street – stairs only.	Accessible stall.
	Crestview Park	No accessible routes to different play equipment. Shade and rest areas for caregivers exist.	No accessible path to multisurface fields.	Pathways that do exist are 60" and accessible, with no inappropriate slopes.	Seasonal/temporary only.
	Howarth Park	Accessible routes to different play equipment, but not within play areas. Shade and rest areas for caregivers exist.	Partial accessibility to and within sport courts.	Pathways that do exist are 60" and paved, with no inappropriate slopes.	None
	Kenning Park & Ice Sports Arena	Accessible routes to sandbox only. Shade and rest areas for caregivers exist. Some inclusive play equipment.	Accessible paths to LittleLeague diamonds, ice arena.	Pathways that exist are accessible.	Accessible toilet rooms.
	Lincoln Hills Golf Course & Dog Park	N/A	Accessible route into (but not within) dog park.	Accessible toilet room.	1 accessible stall.
	Martha Baldwin Park	N/A	N/A	Pathways that do exist are 60" and paved, with no inappropriate slopes.	None
	Pembroke Park	Partial accessible routes to different play equipment. Inclusive play equipment.	No accessible paths to activity centers.	No accessible paths to activity centers.	None
	Poppleton Park	No accessible routes to different play equipment. Shade and rest areas for caregivers exist.	Accessible path to tennis courts only. No accessible path or spectator seating to ball field.	Pathways that do exist are 60" and paved, with no inappropriate slopes. Turnarounds and loading spaces do not exist.	Seasonal/temporary only.
	Quarton Lake Park	N/A	Trail is able-bodied pedestrian-friendly, not wheeled accessible.	Pathways that exist are accessible.	None
	Springdale Golf Course & Park	Partial accessible routes to different play equipment. Shade and rest areas for caregivers exist but could be supplemented. No inclusive play equipment.	Accessible path to clubhouse.	Pathways that exist are accessible.	Accessible toilet rooms.
LEVEL 4	Adams Park	Accessible routes do not exist to all play areas, some inclusive play equipment. Shade and rest areas for caregivers exist.	Accessible routes to basketball court. No accessible routes to track facilities or soccer field.	Pathways that do exist are 60" and accessible, with no inappropriate slopes.	None
	Barnum Center	Accessible routes to different play equipment. Shade (upon landscape maturity) and rest areas for caregivers exist.	Accessible paths to both sides of baseball diamond, spectator areas.	ADA requirements accounted for.	Seasonal/temporary only.
	Booth Park	Accessible routes to separate play areas, some inclusive play equipment. Shade and rest areas for caregivers exist.	N/A	Pathways that do exist are 60" wide and have adequate landings. Stairs and handrails are ADA compliant.	Seasonal/temporary only.
	Shain Park	Accessible routes exist to play areas.	Accessible routes to activity areas; non-accessible fall surface between equipment.	Pathways that do exist are 60" and accessible, with no inappropriate slopes.	None



FACILITIES INVENTORY AND ANALYSIS









c. Walkability and Service Area Mapping

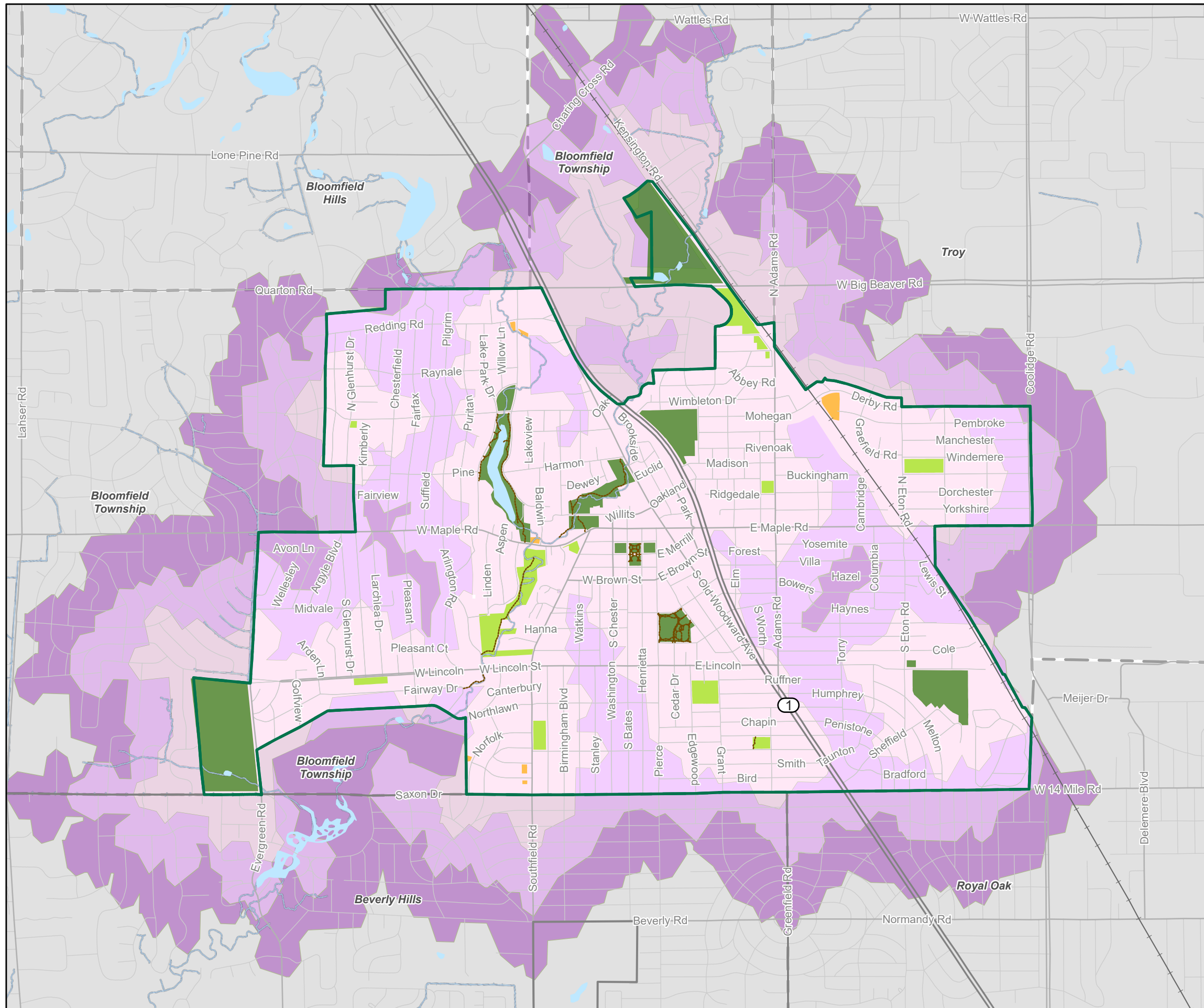
Walkability Analysis

City of Birmingham, Oakland County, Michigan

September 6, 2023

LEGEND

-  Park Trails
-  Community Parks
-  Mini Parks
-  Neighborhood Parks
-  City of Birmingham Boundary
-  15 Minute Walk From Park
-  10 Minute Walk From Park
-  5 Minute Walk From Park



Basemap Source: Michigan Center for Geographic Information, Version 17a.
Data Source: City of Birmingham, 2023. McKenna, 2023.

Population of Children Ages 0-4 by Census Block Group

City of Birmingham, Oakland County, Michigan

September 6, 2023

LEGEND

Total Population Ages 0-4 (2020 U.S. Census)

- < 50
- 50 - 75
- 76 - 100
- 101 - 150
- > 150

5-Minute Walk from Parks

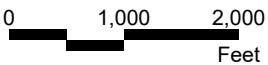
Play Structure

Community Parks

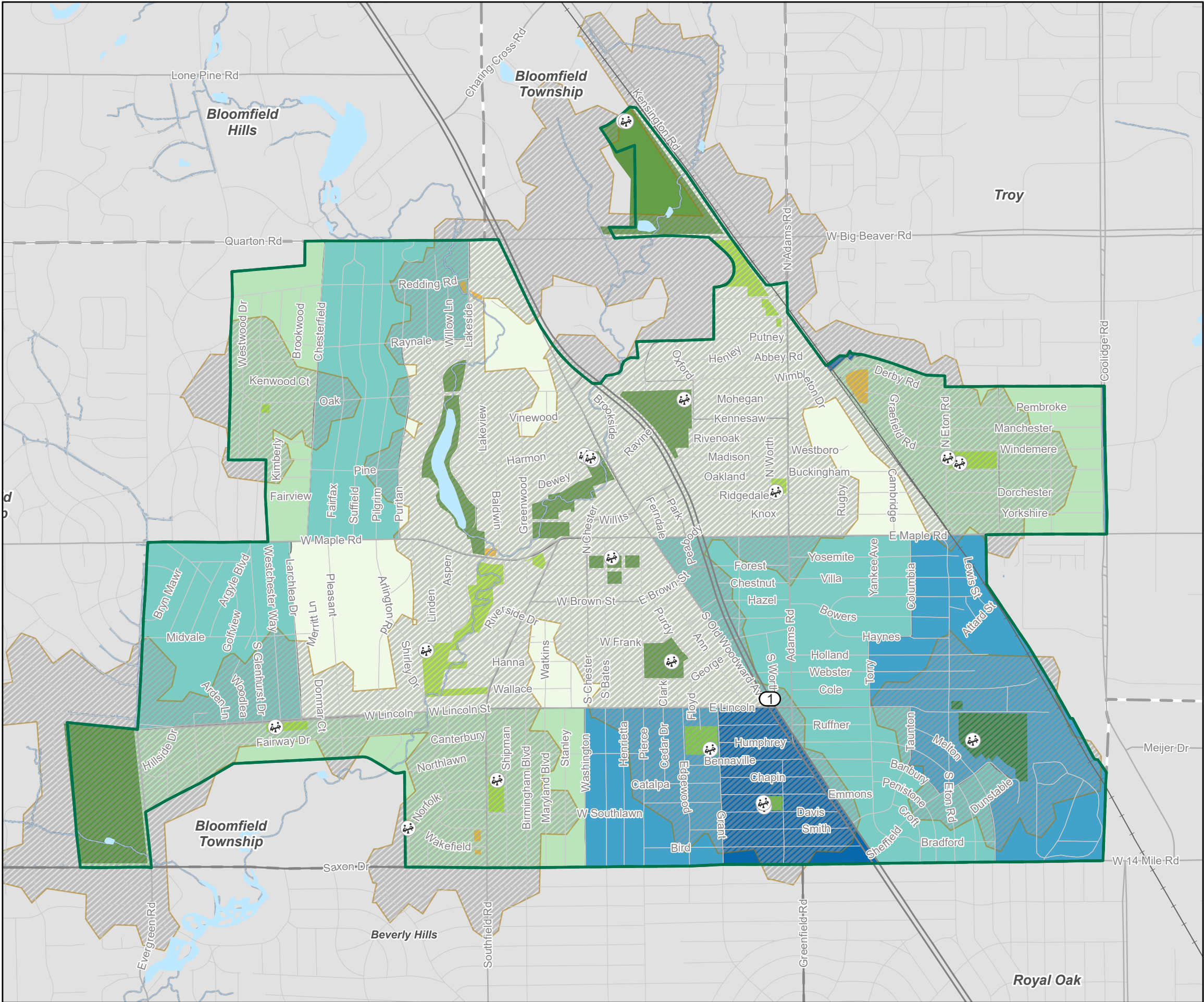
Mini Parks

Neighborhood Parks

City of Birmingham Boundary



Basemap Source: Michigan Center for Geographic Information, Version 17a.
Data Source: U.S. Census, 2020. McKenna, 2023.



Population of Children Ages 5-9 by Census Block Group

City of Birmingham, Oakland County, Michigan

September 6, 2023

LEGEND

Total Population Ages 5-9 (2020 U.S. Census)

- < 50
- 50 - 75
- 76 - 100
- 101 - 150
- > 150

5-Minute Walk from Parks

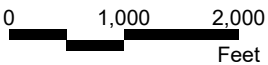
Play Structure

Community Parks

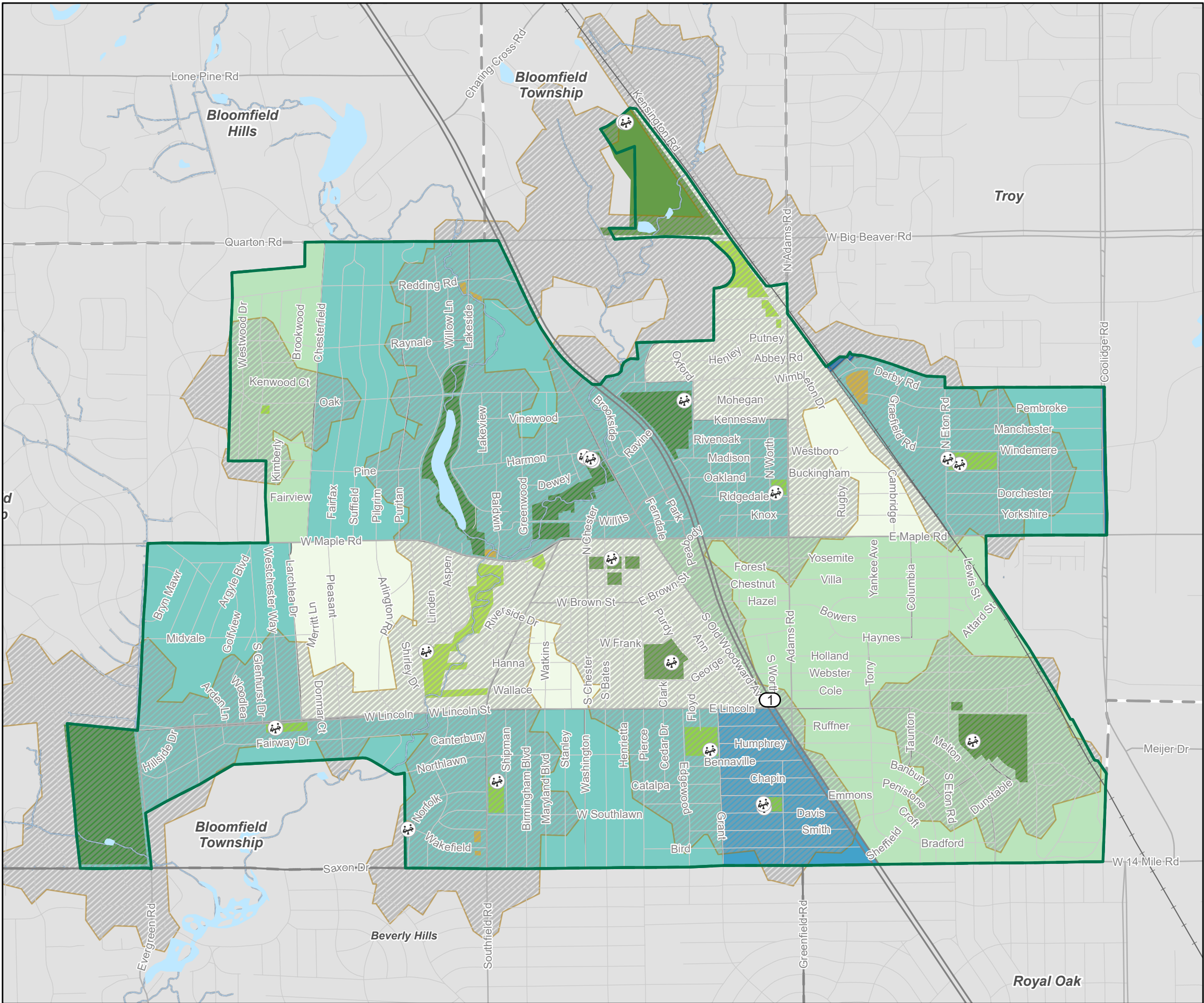
Mini Parks

Neighborhood Parks

City of Birmingham Boundary



Basemap Source: Michigan Center for Geographic Information, Version 17a.
Data Source: U.S. Census, 2020. McKenna, 2023.



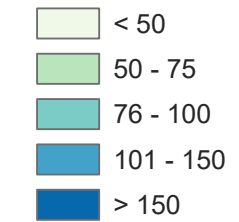
Population of Children Ages 10-14 by Census Block Group

City of Birmingham, Oakland County, Michigan

September 6, 2023

LEGEND

Total Population Ages 10-14 (2020 U.S. Census)



5-Minute Walk from Parks

Play Structure

Community Parks

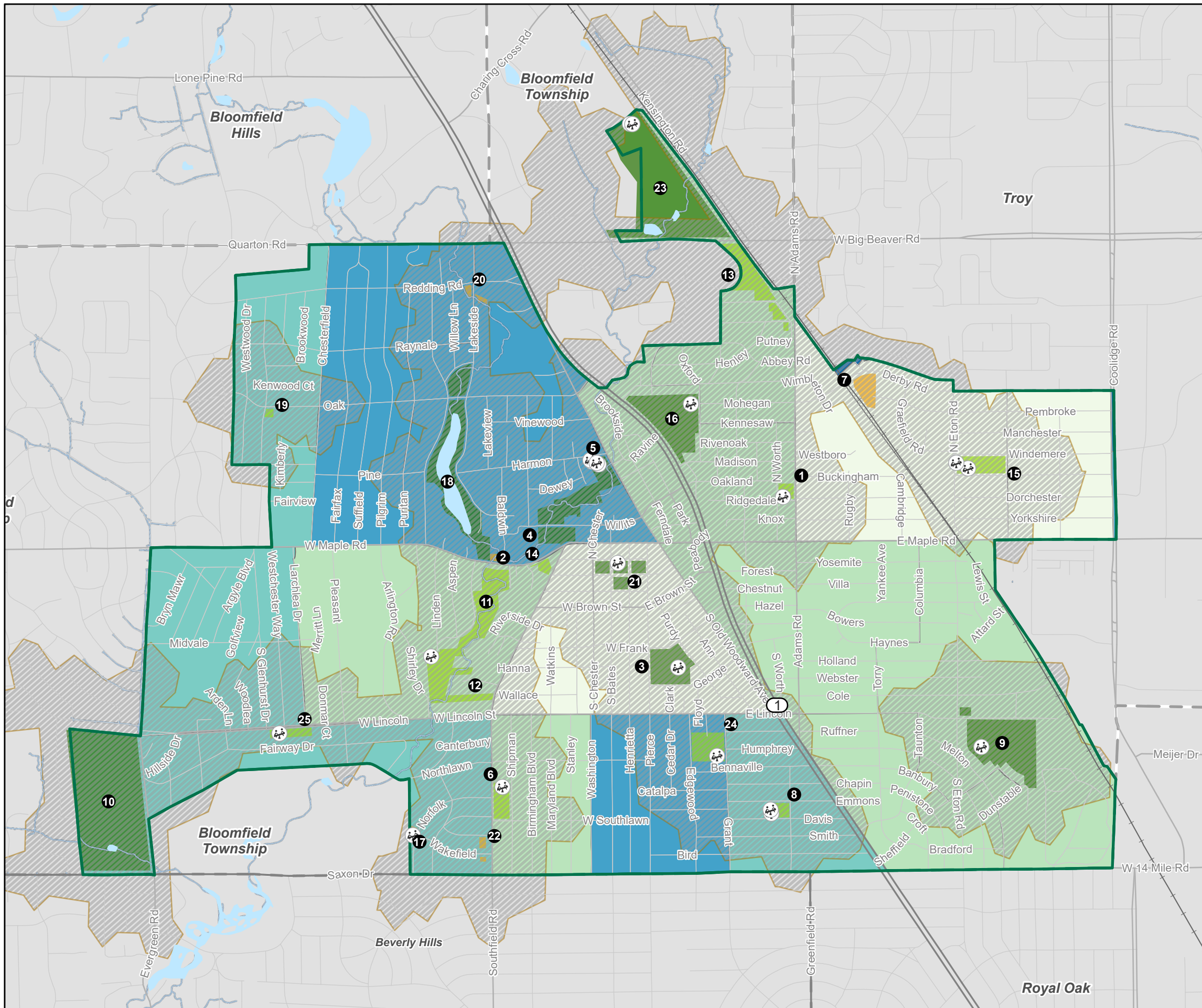
Mini Parks

Neighborhood Parks

City of Birmingham Boundary



Basemap Source: Michigan Center for Geographic Information, Version 17a.
Data Source: U.S. Census, 2020. McKenna, 2023.



Population Over Age 65 by Census Block Group

City of Birmingham, Oakland County, Michigan

September 6, 2023

LEGEND

Total Population 65 years and over (2020 U.S. Census)

- < 100
- 100 - 150
- 151 - 300
- 301 - 450
- > 450

5-Minute Walk from Parks

Community Parks

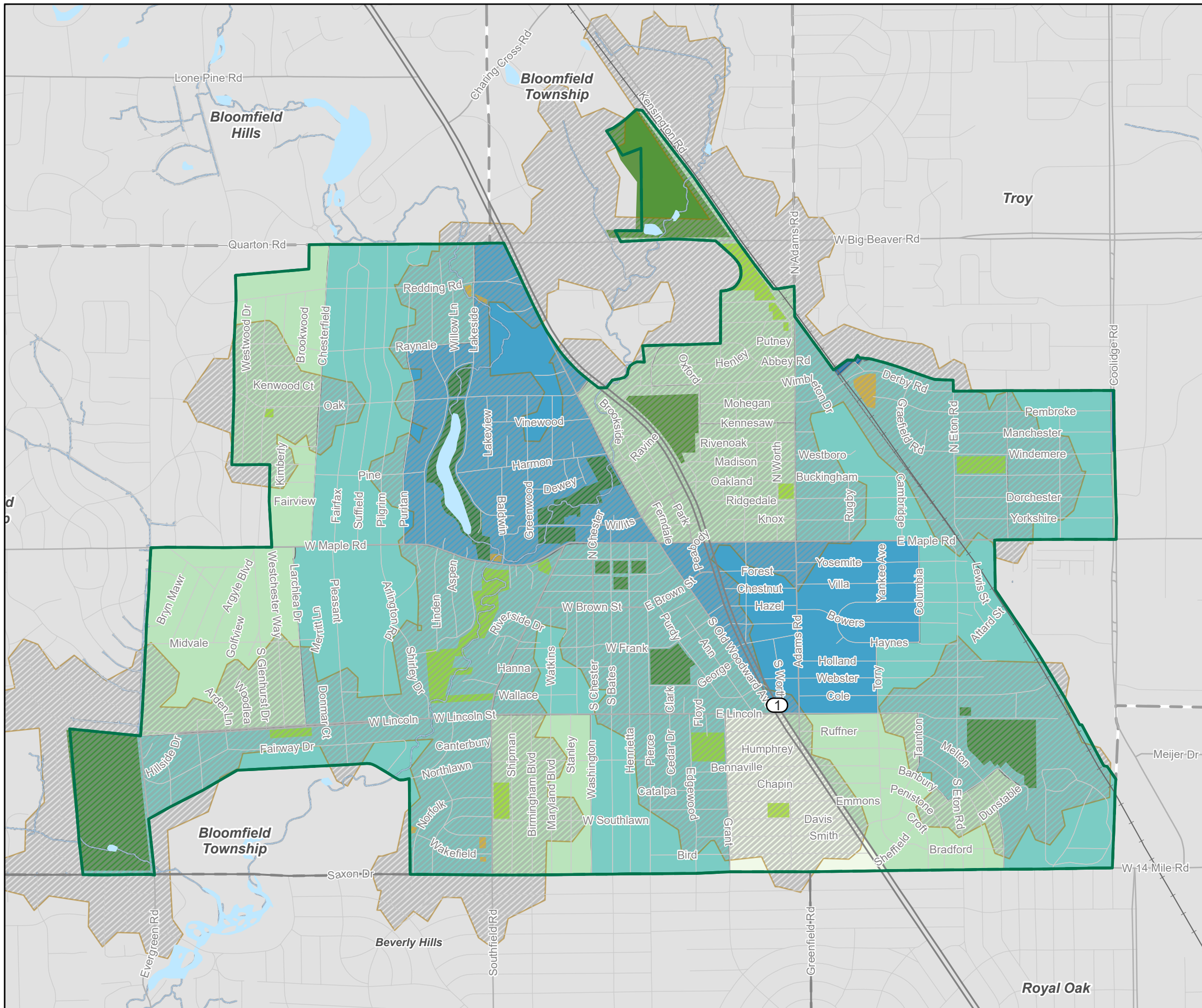
Mini Parks

Neighborhood Parks

City of Birmingham Boundary



Basemap Source: Michigan Center for Geographic Information, Version 17a.
Data Source: U.S. Census, 2020. McKenna, 2023.





FACILITIES INVENTORY AND ANALYSIS

d. Individual Park Summary Draft Pages

Community Park Booth Park

Southwest Corner of Harmon Street and N. Old Woodward Avenue

3.93
acres



Accessibility
Ranking



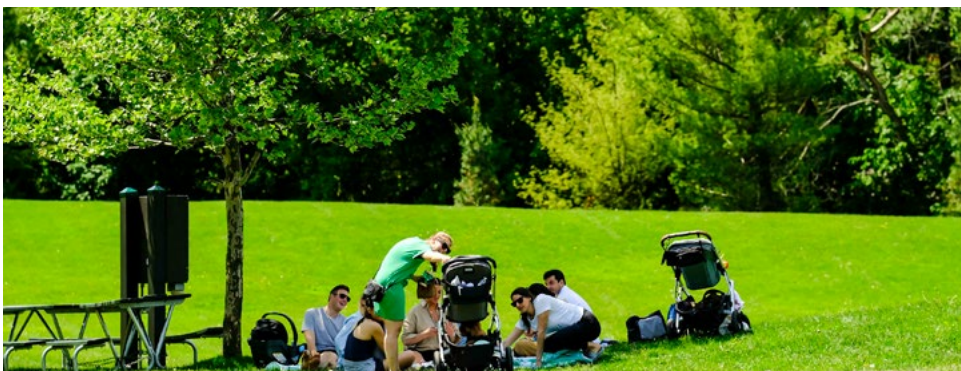
Booth Park is located just north of the downtown core, and north of the Rouge River. The park features an expansive playscape, a labyrinth and tunnel, rock features, turf hill/amphitheater, and during the winter months an area for sledding. Located along the Rouge River, there are important environmental features such as a rain garden, stabilized stream banks, and native plantings. Running through the park and to the south is the Booth Trail section—which ultimately connects to the Birmingham Historical Museum and Park and the Willits Trail and further to the west, the Quarton Lake Trail off W. Maple Road.

The design of Booth Park won a merit award from the Michigan Chapter of the American Society of Landscape Architects (ASLA) in 2009; the park was originally the site of the turn-of-the-century inter-urban railway system. It was later purchased by the Booth family and then donated to Birmingham by the Cranbrook Foundation. It is now a beautiful recreational area attracting hundreds of visitors from all over southeast Michigan.

Soon, Booth Park will receive additional improvements to its trail system from the Parks and Recreation bond project, including a new entry plaza with restrooms and smaller gathering space for a coffee cart / food truck, wayfinding signage, and trail markers.

AMENITIES

- » Playground equipment (2 areas)
- » Swings
- » Event lawn / amphitheater
- » Walking trail (mix of crushed stone and wood chips)
- » Sledding hill
- » Picnic tables (2)
- » Seating (benches)
- » Bike racks (1 set) and a repair station
- » Drinking fountain (1)
- » Rain garden



Mini Park

Derby Well Site

Northeast portion of the City

3.57
acres



Accessibility
Ranking



Located on the northeast portion of the city, this open space area is directly adjacent to the railroad and is south of Derby Road. Pedestrian access to the park is available from both the sidewalk on Derby Road, as well as the sidewalk from the cul-da-sac on Pembroke Road; a short, paved sidewalk traverses the park from these two entry points. Aside from mature trees, and a fenced in water tower, the park largely acts as a natural buffer to the railroad.

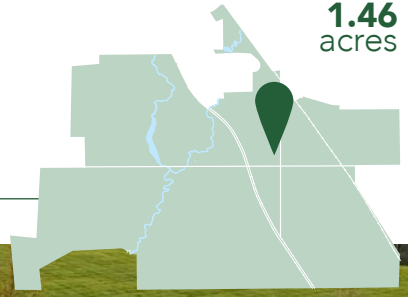
AMENITIES

- » Walking path (.10 miles, paved)

Neighborhood Park Adams Park

1051 Oakland Avenue

1.46
acres



Accessibility
Ranking



Located directly adjacent to Roeper School (a private middle and high school), Birmingham acquired this park property in 2006 from Roeper using bond proceeds from the 2001 City Parks and Recreation Bond issue. As part of the purchase agreement, the city is responsible for the maintenance, lawn care and snow removal; and the property must be used as a public park so long as the school is operated. In addition, Roeper utilizes the park during the school year for activities currently undertaken by the school on the grounds; the city works with the school on coordinating activities during the school year.

In 2021, a concept plan for Adams Park was adopted and construction on the redesigned space started in June of 2022. Today, Adams Park features several active recreational amenities and a gathering space, as well as green infrastructure.

AMENITIES

- » Basketball court
- » Playground equipment
- » Swings
- » Open space (multi-purpose field)
- » Picnic table (1)
- » Seating (benches, 9)
- » Gathering space with small pergola
- » Long jump track
- » Shot put and discus pitch
- » Bike racks (1 set)
- » Drinking fountains (2)
- » Rain garden



V. PUBLIC ENGAGEMENT UPDATE

a. Roundtable Summaries

SESSION 1: CITY DEPARTMENT HEADS

20 Attendees representing:

City Manager, Assistant CM, DPS / Parks, Planning, Engineering, Communications, Clerk, Police, IT, Fire, Museum, Building

Suggested Key Issues and Priorities for the Plan to Address:

- Help the City be intentional about neighborhood improvements and align with 2040 plan.
- Encourage and identify needed amenities in neighborhood parks.
- Facilitate aging in place, inter-generational recreation spaces, and incorporate universal design.
- Add adult exercise equipment, wireless access, more winter activities, and 'yard game' activities to parks system.
- Consider parks as infrastructure with regard to sustainability: realize sustainability opportunities, and use improvements in parks to educate residents.
- Consider flexibility and recreation trends when planning for new equipment.
- Encourage park design for safety, monitoring and sound mitigation.
- Seek more partnerships for programming
- Make public more aware of recreational offerings (through the publishing of a magazine, website guide to amenities in each park, etc.)
- Address areas of the City that are underserved with regard to walkable recreational amenities, especially the Torry neighborhood.
- Consider MoGo and other transportation enhancements in appropriate parks.
- Enhance the River Rouge ecosystem.
- Enhance the golf courses: Short term, integrate them better into City's recreation offerings. Long term, make them more sustainable and activate them during the winter.

SESSION 2: COMMUNITY BOARDS

8 Attendees representing:

Arts Board, Clerk's Office, Museum Board, Museum Director, Greenwood Cemetery

Suggested Key Issues for the Plan to Address:

- Add 'touch of art' and 'a touch of history' to all parks (i.e., through art walks, ongoing sculpture program, etc.)
- Make park signage (or other signage) educational, QR codes, other content.



- Use art as park programming / activation (i.e., permanent easels for plein air painting, chalk art festival, 'creative benches (custom artist-designed benches), etc.)
- Add more walking paths at parks (e.g., at Pembroke) and more benches and places to rest.
- Seek partnerships for community gardens.

Strengths of Park System to Be Maintained:

- Abundance of parks and trails, lots of variety in offerings
- Public is supportive of park system because of consistency, quality of provision.
- Parks are easily accessible and integrated into neighborhoods.

SESSION 3: SHOPPING DISTRICTS

4 Attendees representing:

BSD Staff, BSD Board, Realtors, Property Owners

Suggested Key Issues and Priorities for the Plan to Address:

- Safety in some parks that are not fenced / there is no separation between play areas and parks (e.g., St. James, Crestview).
- Safety in Booth Park and emergency management plans for large events.
- Add public restrooms in a responsible way.
- Increase park 'activation' (especially in downtown parks) through activities like lawn games, food truck infrastructure, etc.
- Consider office users with regard to planning for amenity provision in parks – parks can be part of city's business attraction and retention advantages.

Infrastructure Needs at Downtown Parks:

- Storage
- Enhanced / increased electrical
- Splash pad / water feature

SESSION 4: LEAGUES AND ASSOCIATIONS

2 Attendees representing:

Little League, YMCA

Suggested Key Issues and Priorities for the Plan to Address:

- Renovation (in partnership with Little League) of remaining two fields at Kenning Park.
- Preservation / maintenance of space for outdoor kid's programming.
- Accessibility: more convenient restrooms, shade for sport field spectators.
- Add adult fitness stations along walking paths.

SESSION 5: ENVIRONMENTAL / SUSTAINABILITY INTEREST GROUP

3 Attendees representing:



Friends of the Rouge (Additional interview forthcoming), City planning dept.

Suggested Key Issues and Priorities for the Plan to Address:

- Education opportunities to advance public understanding of watershed, stormwater run-off.
- Seek partnerships for green infrastructure, pathways and improving riparian zones (removing invasive species, potentially habitat restoration, pollinator habitats).
- The Parks plan can help reinforce/set the stage for the forthcoming sustainability strategy around certain strategic issues (e.g., re-use and salvage for improvements, transit connections, contracts, and procurement).

SESSION 6: AGING IN PLACE INTEREST GROUP

5 Attendees representing:

Aging in Place ad-hoc committee, NEXT

Suggested Key Issues and Priorities for the Plan to Address:

- Restrooms are essential to senior-friendly parks.
- Maintain intergenerational recreation, especially at St. James Park.
- Add adult outdoor exercise equipment.
- Add more multi-use and other walking trails throughout park system.
- Integrate signed trails within neighborhoods utilizing existing sidewalk network.
- Consider a 'senior' baseball field.
- Consider practical seating for older users, especially in downtown parks (e.g., picnic tables, more non-moveable / stable seating).
- Add pavilions to more parks.
- Enhance communication strategies regarding amenities and offerings so people are aware.
- Engage non-active seniors [not necessarily to be solved by parks plan, but important to consider for community building].
- Add accessible playground equipment.

SESSION 7: NEIGHBORHOODS

2 Attendees and 1 1:1 interview representing:

Birmingham Estates, Birmingham Farms, Torry Neighborhood groups

Suggested Key Issues and Priorities for the Plan to Address:

- Maintain variety of park offerings, maintain passive recreation and informal green space.
- Dedicate green space in underserved neighborhoods, especially the Torry neighborhood (e.g., Cambridge and Buckingham city-owned property).
- Increase shade canopy.
- Consider activating mini-parks with classes, other low-impact programming (e.g., adult exercise classes, etc.).
- Maintain aging equipment.



- Consider re-visiting and updating Kenning Park plan to address community desires, pedestrian access, desire for additional soccer field.

Population is well-served by parks in general, and park space is a valuable asset – continue success in maintaining and providing excellent service.



MEMORANDUM

Department of Public Services

DATE: September 12, 2023

TO: Parks and Recreation Board

FROM: Carrie Laird, Parks & Recreation Manager

SUBJECT: Pickleball Update

At the August 1, 2023 Parks and Recreation Board meeting, the board expressed interest in reviewing complaints received by the City regarding the Pickleball courts.

The Department of Public Services (DPS) has received multiple complaints/concerns from one neighbor in particular on Shipman, who also attended the October 2022 Parks and Recreation Board meeting to express concerns.

Concerns expressed are as follows:

- Foul language on the courts
- Noise levels- decibel levels
- Car traffic
- Cars utilize driveways of residents to turn around
- Cars park on both sides of Shipman and Southlawn, creating a only a singular lane for traffic
- Hours of the courts- needing hour adjustment in the fall/winter- should be dawn to dusk, concerns with portable lights
- Pickleball players do not comply with the hours, playing well into the dark at times

Another resident on Shipman, expressed "dissent" via email in October of 2022, about the City's intention to provide *more* pickleball courts to an area that they believe is not patrolled or enforced enough with regard to no parking signs and the stop sign. Additional concerns expressed include: "inappropriate music, loads of traffic, terrible driving, and drawing a much different crowd, and it's become a rec center".

A resident on Southfield Rd, expressed concern in October of 2022, and more recently, in July and August 2023. Concerns include: nonstop noise from not only the sport but also yelling and screaming, parking on both sides of the street, parking across from her driveway, and speeding. The resident has requested the implementation of sound barriers of some kind.

Staff has encouraged residents to file complaints using our govpiilot app rather than email, as the appropriate department is able to respond more quickly and efficiently. A report showing the complaints/concerns for the pickleball courts is attached.

Additionally, Pickleball players have made the request for afternoon open play to promote an open and family atmosphere. Currently, the reservations are available between 12 pm and 8 pm and all six courts may be reserved by residents only. Open play is currently available between the hours of 9am-12 pm daily. A report showing the total number of reservations is attached.

Staff is considering removing three westerly courts from the reservation system and moving the paddle holder to the west entrance in order to provide 3 courts for open play between the hours of 9am and 8pm.

The Pickleball Court Rules are attached for reference.

Date Entered	Status	Concern Address	Department Assigned	Concern Type	Concern Description	Complainant Email
6/27/2023	Closed	1760 SHIPMAN BLVD	Code Enforcement	Other	Crestview Park - pickleball being played after 9:10pm. Thursday pickleball was ongoing after 9:45pm for instance.	crestviewpickleball@gmail.com
6/27/2023	Closed	1760 SHIPMAN BLVD	Police	Other	Crestview Park - children running a store to sell to pickleball players and also visiting homes near the park to ask them to shop.	crestviewpickleball@gmail.com
7/6/2023	Closed		Parks	Other	City of Centennial, CO issues moratorium on new pickleball courts within 500 feet of homes. The Crestview courts are roughly 100 feet from some homes with many homes within 500 feet. Document photos included. The documents are clear on harm to residents.	crestviewpickleball@gmail.com
7/7/2023	Closed		Parks	Other	Crestview Pickleball Hours: Thr signs at the park imply 9am -8pm. The Ciry website says 7am- 9pm in one spot and 9am- 8pm in another? Also, will the police be able to enforce these hours? The current city ordinance only allows endorcement between 10pm and 6am.	crestviewpickleball@gmail.com
7/7/2023	Closed		Miscellaneous	Other	Article: Judge orders pickleball courts on Cape Cod be closed. Article photos attached.	crestviewpickleball@gmail.com
7/9/2023	Closed		Miscellaneous	Other	Crestview Park - 5 courts of pickleball being played after 8:30pm on Sunday when signs now clearly state 9-8	crestviewpickleball@gmail.com
7/10/2023	Closed		Parks	Other	Crestview Park - pickleball courts being used at 8:25am when they open at 9am	crestviewpickleball@gmail.com
7/12/2023	Closed		Parks	Other	Crestview Park Pickleball: New York Times article on pickleball in photos. Hear from residents of Arlington VA, Wellesley MA, York ME, Scottsdale AZ, Longboat Key FL, West Linn OR on negative pickleball court impact to residents	crestviewpickleball@gmail.com
7/19/2023	Closed		Parks	Parks - Trash/Debris	Crestview Pickleball - Police continue to clear the courts at 8pm (thank you!) otherwise no one would leave. After the police depart, new vehicles show up and start playing. The courts need a gate since people ignore the operating hours.	crestviewpickleball@gmail.com
7/23/2023	Closed		Parks	Parks - Trash/Debris	Crestview Park - pickleball being played during rain and post rain on wet courts. This has been witnessed two weekends in a row.	crestviewpickleball@gmail.com

Date Entered	Status	Concern Address	Department Assigned	Concern Type	Concern Description	Complainant Email
7/24/2023	Closed		Parks	Parks - Trash/Debris	Article: Should pickleball be played in the rain? See attached image. The answer is no to avoid serious injury. If players cannot make good judgements about playing in the rain, following operating hours, foul language, car speed, driving beyond the sidewalk onto private driveways, etc, the courts should not be at Crestview.	crestviewpickleball@gmail.com
7/25/2023	Closed		Parks	Parks - Trash/Debris	Crestview Park - pickleball being played after 8:00pm on Monday evening.	crestviewpickleball@gmail.com
7/26/2023	Closed		Parks	Parks - Trash/Debris	Crestview Pickleball. Players on courts past 8pm on Tuesday and only departed when police arrived. Players on courts before 9am on Wednesday with roughly 30 cars there by 9:30am. If the players cannot follow rules, the courts should not be here.	crestviewpickleball@gmail.com
8/9/2023	Closed		Parks	Parks - Trash/Debris	NBC Nightly News story on pickleball noise: https://m.youtube.com/watch?v=1AI6uiFqbmM	crestviewpickleball@gmail.com
8/9/2023	Closed		Parks	Parks - Trash/Debris	Four picnic tables moved from their original location to the pickleball courts.	crestviewpickleball@gmail.com
8/14/2023	Closed		Parks	Parks - Trash/Debris	Paddletek, a leading manufacturer of pickleball equipment, recommends courts be at least 500ft from homes. See attached image. Crestview courts start at roughly 100ft.	crestviewpickleball@gmail.com
8/16/2023	Closed		Parks	Parks - Trash/Debris	Can someone please explain how the Crestview Pickleball courts were pushed through when Birmingham Country Club (BCC - 0.5 miles away) still cannot get courts approved for the same issues (home proximity, noise, traffic)? City Commioners recommended appropriate studies be done lfor residents near BCC. The park board also notes Crestview was at the bottom of their list until they ran low on funds.	crestviewpickleball@gmail.com
8/18/2023	Closed		Parks	Parks - Trash/Debris	Pickleball courts closed near Grand Rapids, MI due to noise - https://www.mlive.com/news/grand-rapids/2023/08/neighbors-complained-of-noise-now-you-cant-play-pickleball-at-this-city-park.html?outputType=amp	crestviewpickleball@gmail.com

Facility Demographics - Summary Report

Rental Dates: 6/1/2023 - 9/9/2023

09/08/2023 09:46 AM

Total Rentals	
Rentals	1,676

Facility Categories	
Parks	1,676

Room Categories	
Pickleball	1,676

Facilities	
Crestview Park	1,676

Rooms	
Crestview Park - Pickleball #1	336
Crestview Park - Pickleball #2	255
Crestview Park - Pickleball #3	274
Crestview Park - Pickleball #4	272
Crestview Park - Pickleball #5	234
Crestview Park - Pickleball #6	305

Use Types	
Pickleball Court	1,676

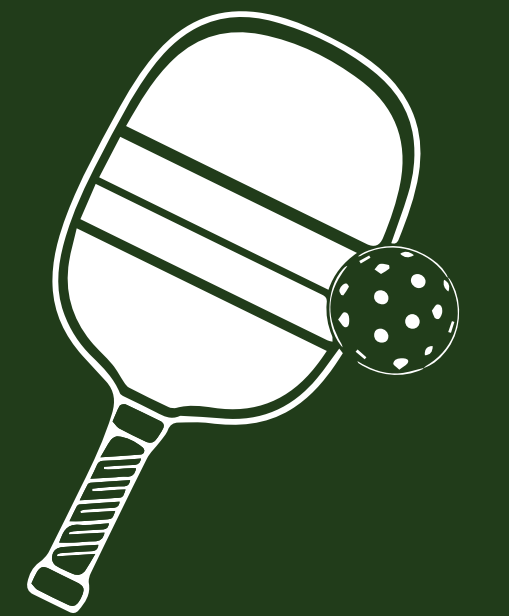
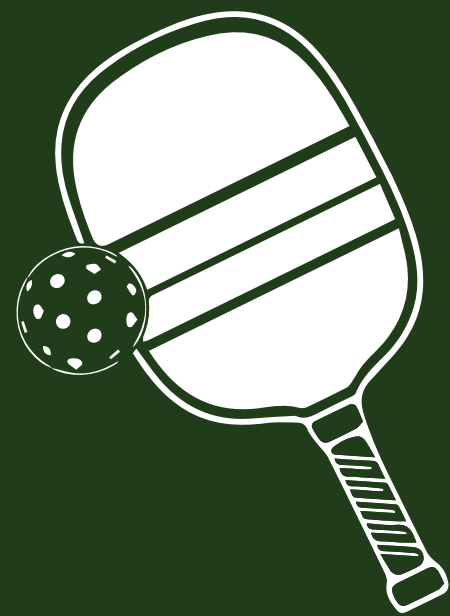
Municipalities	
Beverly Hills	1
City of Birmingham	1,672
Troy	3

Residency	
Non-Resident	4
Resident	1,672



BIRMINGHAM

Pickleball Rules



Reservations available 12pm-8pm daily
(no charge) for residents only:
Visit www.play.bhamgov.org to reserve

- Pickleball Only
- Good sportsmanship is the rule, respect all players
- Limit Play to 1 hour if others are waiting
- Designated Open Play 9am-12pm daily- see Open Play rules
- Use the Pickleball Courts at your own risk
- No pets on courts
- No food, glass or alcoholic beverages
- No foul, combative or hostile language
- No amplified music
- No in-line skates, skateboards, bicycles, wagons, roller-skates or scooters
- Proper footwear required
- Children under the age of 12 must be accompanied by an adult
- Residents may reserve two (2) hours of court time per week for up to two (2) weeks
- Private classes are not allowed without written permission from the Parks & Recreation Office. In addition, the established fee of \$5/court for private classes applies for every 2 hours reserved
- Paddles/balls are available for rent at the Parks and Recreation Office

Parks & Recreation 248-530-1642

These rules are subject to change at any time and without prior notice.



BIRMINGHAM

Open Play Rules

(Mixed Skill Level)

9am-12pm Daily

- When courts are full, waiting players are to place their paddles in the paddle holder
- If there is a paddle or more up in the paddle holder, even if there are empty courts: Teams that have finished their game-losers come off the courts and allow the waiting player(s) to mix in
- If there are eight (8) or more waiting: The entire foursome should exit the court upon completion of their game
- As players remove their paddles from the holder, they should move the bar to the right to the next set of paddles waiting and so on. If players remove their paddles at the far right or end of the holder, they should slide the bar back to the left or beginning of the holder